



Test Report

Report No. A2260097869101

Page 1 of 27

Company Name YUNG LI CO.,LTD**shown on Report****Address** NO. 32, DAPU INDUSTRIAL ST.,CHANGPING TOWN, DONGGUAN
CITY,GUANGDONG PROVINCE,CHINA 523571

The following sample(s) and sample information was/were submitted and identified by/on the behalf of the applicant

CTI Sample ID	Sample Name	Material
001	POWER CORD	TPE BLACK
002		TPE WHITE
003		TPE BROWN
004		TPE BLUE
005		TPE YELLOW
006		TPE GREEN
007		TPE GRAY
008		INNERBODY
009		INNER CASE
010		CABLE COPPER
011		COPPER ALLOY
012		TERMINAL COPPER

Sample Received Date Feb. 3, 2026
Testing Period Feb. 3, 2026 to Feb. 11, 2026**Test Conducted:**

As requested by the applicant. For details refer to next page(s)



Approved by

Yin Chi

Date

Feb. 13, 2026

Yin Chi

Lab Authorized Signatory

No. R582751766

Centre Testing International (Ningbo) Co.,Ltd.

1-2F, Eastern Factory, No.76, Jinghua Road, High-Tech Zone, Ningbo, Zhejiang, China

Test Report

Report No. A2260097869101

Page 2 of 27

Executive Summary:**TEST REQUEST****CONCLUSION**

1. Persistent, Bioaccumulative, and Toxic (PBT) Chemicals under US EPA Toxic Substances Control Act (TSCA) Section 6(h)	
- Decabromodiphenyl Ether (DecaBDE)	PASS
- Phenol, Isopropylated Phosphate (PIP (3:1))	PASS
- 2,4,6-tris(tert-butyl) phenol (2,4,6-TTBP)	PASS
- Hexachlorobutadiene (HCBD)	PASS
- Pentachlorothiophenol (PCTP)	PASS
2. As specified by client, to test Lead (Pb), Cadmium (Cd), Mercury (Hg), Hexavalent Chromium (Cr(VI)), Polybrominated Biphenyls (PBBs), Polybrominated Diphenyl Ethers (PBDEs), Phthalates, Polycyclic Aromatic Hydrocarbons (PAHs), Tetrabromobisphenol A (TBBP-A), Halogen(s), Perfluorooctane Sulfonates(PFOS), Red phosphorus in the submitted sample(s).	See test result(s)

***** For further details, please refer to the following page(s) *****

Test Report

Report No. A2260097869101

Page 3 of 27

1.1 Persistent, Bioaccumulative, and Toxic (PBT) Chemicals under US EPA Toxic Substances Control Act (TSCA) Section 6(h)

▼ Decabromodiphenyl Ether (DecaBDE)

Test Method: Refer to US EPA 3550C:2007 & US EPA 8270E:2018; Test Equipment: GC-MS

<u>Tested Item(s)</u>	<u>Result (mg/kg)</u>			<u>MDL</u> (mg/kg)	<u>Limit</u> (mg/kg)
	001	002	003		
Decabromodiphenyl Ether (DecaBDE)	N.D.	N.D.	N.D.	5	1000

<u>Tested Item(s)</u>	<u>Result (mg/kg)</u>			<u>MDL</u> (mg/kg)	<u>Limit</u> (mg/kg)
	004	005	006		
Decabromodiphenyl Ether (DecaBDE)	N.D.	N.D.	N.D.	5	1000

<u>Tested Item(s)</u>	<u>Result (mg/kg)</u>			<u>MDL</u> (mg/kg)	<u>Limit</u> (mg/kg)
	007	008	009		
Decabromodiphenyl Ether (DecaBDE)	N.D.	N.D.	N.D.	5	1000

Remark:

- MDL = Method Detection Limit
- N.D. = Not Detected (<MDL)
- mg/kg = ppm = parts per million
- The limit applies to the situation where Decabromodiphenyl Ether (DecaBDE) is not intentionally added to the product or article. It is recommended to verify the addition of these substances through the supply chain.

Test Report

Report No. A2260097869101

Page 4 of 27

▼ Phenol, Isopropylated Phosphate (PIP (3:1))

Test Method: Refer to US EPA 3550C:2007 & US EPA 8270E:2018; Test Equipment: GC-MS

<u>Tested Item(s)</u>	<u>Result (mg/kg)</u>			<u>MDL</u> (mg/kg)	<u>Limit</u> (mg/kg)
	001	002	003		
Phenol, Isopropylated Phosphate (PIP (3:1))	N.D.	N.D.	N.D.	5	1000

<u>Tested Item(s)</u>	<u>Result (mg/kg)</u>			<u>MDL</u> (mg/kg)	<u>Limit</u> (mg/kg)
	004	005	006		
Phenol, Isopropylated Phosphate (PIP (3:1))	N.D.	N.D.	N.D.	5	1000

<u>Tested Item(s)</u>	<u>Result (mg/kg)</u>			<u>MDL</u> (mg/kg)	<u>Limit</u> (mg/kg)
	007	008	009		
Phenol, Isopropylated Phosphate (PIP (3:1))	N.D.	N.D.	N.D.	5	1000

Remark:

- MDL = Method Detection Limit
- N.D. = Not Detected (<MDL)
- mg/kg = ppm = parts per million
- The limit applies to the situation where Phenol, Isopropylated Phosphate (PIP (3:1)) is not intentionally added to the product or article. It is recommended to verify the addition of these substances through the supply chain.

Test Report

Report No. A2260097869101

Page 5 of 27

▼ **2,4,6-tris(tert-butyl) phenol (2,4,6-TTBP)**

Test Method: Refer to US EPA 3550C:2007 & US EPA 8270E:2018; Test Equipment: GC-MS

<u>Tested Item(s)</u>	<u>Result (mg/kg)</u>			<u>MDL</u> (mg/kg)	<u>Limit</u> (mg/kg)
	001	002	003		
2,4,6-tris(tert-butyl) phenol (2,4,6-TTBP)	N.D.	N.D.	N.D.	5	3000

<u>Tested Item(s)</u>	<u>Result (mg/kg)</u>			<u>MDL</u> (mg/kg)	<u>Limit</u> (mg/kg)
	004	005	006		
2,4,6-tris(tert-butyl) phenol (2,4,6-TTBP)	N.D.	N.D.	N.D.	5	3000

<u>Tested Item(s)</u>	<u>Result (mg/kg)</u>			<u>MDL</u> (mg/kg)	<u>Limit</u> (mg/kg)
	007	008	009		
2,4,6-tris(tert-butyl) phenol (2,4,6-TTBP)	N.D.	N.D.	N.D.	5	3000

Remark:

- MDL = Method Detection Limit
- N.D. = Not Detected (<MDL)
- mg/kg = ppm = parts per million

Test Report

Report No. A2260097869101

Page 6 of 27

▼ Hexachlorobutadiene (HCBD)

Test Method: Refer to US EPA 3550C:2007 & US EPA 8270E:2018; Test Equipment: GC-MS

<u>Tested Item(s)</u>	<u>Result (mg/kg)</u>			<u>MDL</u> (mg/kg)	<u>Limit</u> (mg/kg)
	001	002	003		
Hexachlorobutadiene (HCBD)	N.D.	N.D.	N.D.	5	N.D.

<u>Tested Item(s)</u>	<u>Result (mg/kg)</u>			<u>MDL</u> (mg/kg)	<u>Limit</u> (mg/kg)
	004	005	006		
Hexachlorobutadiene (HCBD)	N.D.	N.D.	N.D.	5	N.D.

<u>Tested Item(s)</u>	<u>Result (mg/kg)</u>			<u>MDL</u> (mg/kg)	<u>Limit</u> (mg/kg)
	007	008	009		
Hexachlorobutadiene (HCBD)	N.D.	N.D.	N.D.	5	N.D.

Remark:

- MDL = Method Detection Limit
- N.D. = Not Detected (<MDL)
- mg/kg = ppm = parts per million

Test Report

Report No. A2260097869101

Page 7 of 27

▼ Pentachlorothiophenol (PCTP)

Test Method: Refer to US EPA 3550C:2007 & US EPA 8270E:2018; Test Equipment: GC-MS

Tested Item(s)	Result (mg/kg)			MDL (mg/kg)	Limit (mg/kg)
	001	002	003		
Pentachlorothiophenol (PCTP)	N.D.	N.D.	N.D.	5	10000

Tested Item(s)	Result (mg/kg)			MDL (mg/kg)	Limit (mg/kg)
	004	005	006		
Pentachlorothiophenol (PCTP)	N.D.	N.D.	N.D.	5	10000

Tested Item(s)	Result (mg/kg)			MDL (mg/kg)	Limit (mg/kg)
	007	008	009		
Pentachlorothiophenol (PCTP)	N.D.	N.D.	N.D.	5	10000

Remark:

- MDL = Method Detection Limit
- N.D. = Not Detected (<MDL)
- mg/kg = ppm = parts per million

Sample/Part Description

No.	CTI Sample ID	Description
1	001	Black plastic grains
2	002	White plastic grains
3	003	Brown plastic grains
4	004	Blue plastic grains
5	005	Yellow plastic grains
6	006	Green plastic grains
7	007	Grey plastic grains
8	008	White plastic
9	009	Black plastic

Test Report

Report No. A2260097869101

Page 8 of 27

2.1 Test Method

Tested Item(s)	Test Method	Measured Equipment(s)
Lead (Pb)	IEC 62321-5:2013	ICP-OES
Cadmium (Cd)	IEC 62321-5:2013	ICP-OES
Mercury (Hg)	IEC 62321-4:2013+AMD1:2017 CSV	ICP-OES
Hexavalent Chromium (Cr(VI))	IEC 62321-7-1:2015	UV-Vis
	IEC 62321-7-2:2017 and/or determination of Total Chromium by IEC 62321-5:2013	UV-Vis/ICP-OES
Polybrominated Biphenyls (PBBs)	IEC 62321-6:2015	GC-MS
Polybrominated Diphenyl Ethers (PBDEs)	IEC 62321-6:2015	GC-MS
Phthalates (DBP, BBP, DEHP, DIBP)	IEC 62321-8:2017	GC-MS
Polycyclic Aromatic Hydrocarbons (PAHs)	Refer to AfPS GS 2019:01 PAK	GC-MS
Tetrabromobisphenol A (TBBP-A)	Refer to US EPA 3550C:2007 & US EPA 8321B:2007	LC-MS-MS
Halogen(s)	EN 14582:2016	IC
Perfluorooctane Sulfonates(PFOS)	Refer to EN 17681-1:2025	LC-MS-MS
Phthalates	Refer to EN 14372:2004(E)	GC-MS
Red phosphorus	GB/T 6040-2019, GB/T 9722-2023, GB/T 17359-2023, EPA 6010D:2018	ICP-OES, PY-GC-MS, FTIR, EM

Test Report

Report No. A2260097869101

Page 9 of 27

2.2 Test Result(s)

Tested Item(s)	Result			MDL
	001	002	003	
Lead (Pb)	N.D.	N.D.	N.D.	2 mg/kg
Cadmium (Cd)	N.D.	N.D.	N.D.	2 mg/kg
Mercury (Hg)	N.D.	N.D.	N.D.	2 mg/kg
Hexavalent Chromium (Cr(VI))	N.D.	N.D.	N.D.	8 mg/kg
	--	--	--	0.10 $\mu\text{g}/\text{cm}^2$ (LOQ)

Tested Item(s)	Result			MDL
	004	005	006	
Lead (Pb)	N.D.	N.D.	N.D.	2 mg/kg
Cadmium (Cd)	N.D.	N.D.	N.D.	2 mg/kg
Mercury (Hg)	N.D.	N.D.	N.D.	2 mg/kg
Hexavalent Chromium (Cr(VI))	N.D.	N.D.	N.D.	8 mg/kg
	--	--	--	0.10 $\mu\text{g}/\text{cm}^2$ (LOQ)

Tested Item(s)	Result			MDL
	007	008	009	
Lead (Pb)	N.D.	N.D.	N.D.	2 mg/kg
Cadmium (Cd)	N.D.	N.D.	N.D.	2 mg/kg
Mercury (Hg)	N.D.	N.D.	N.D.	2 mg/kg
Hexavalent Chromium (Cr(VI))	N.D.	N.D.	N.D.	8 mg/kg
	--	--	--	0.10 $\mu\text{g}/\text{cm}^2$ (LOQ)

Tested Item(s)	Result			MDL
	010	011	012	
Lead (Pb)	N.D.	17516 mg/kg	30 mg/kg	2 mg/kg
Cadmium (Cd)	N.D.	N.D.	N.D.	2 mg/kg
Mercury (Hg)	N.D.	N.D.	N.D.	2 mg/kg
Hexavalent Chromium (Cr(VI))	--	--	--	8 mg/kg
	N.D.▼	N.D.▼	N.D.▼	0.10 $\mu\text{g}/\text{cm}^2$ (LOQ)

Test Report

Report No. A2260097869101

Page 10 of 27

Tested Item(s)	Result			MDL
	001	002	003	
Polybrominated Biphenyls (PBBs)				
Monobromobiphenyl	N.D.	N.D.	N.D.	5 mg/kg
Dibromobiphenyl	N.D.	N.D.	N.D.	5 mg/kg
Tribromobiphenyl	N.D.	N.D.	N.D.	5 mg/kg
Tetrabromobiphenyl	N.D.	N.D.	N.D.	5 mg/kg
Pentabromobiphenyl	N.D.	N.D.	N.D.	5 mg/kg
Hexabromobiphenyl	N.D.	N.D.	N.D.	5 mg/kg
Heptabromobiphenyl	N.D.	N.D.	N.D.	5 mg/kg
Octabromobiphenyl	N.D.	N.D.	N.D.	5 mg/kg
Nonabromobiphenyl	N.D.	N.D.	N.D.	5 mg/kg
Decabromobiphenyl	N.D.	N.D.	N.D.	5 mg/kg

Tested Item(s)	Result			MDL
	004	005	006	
Polybrominated Biphenyls (PBBs)				
Monobromobiphenyl	N.D.	N.D.	N.D.	5 mg/kg
Dibromobiphenyl	N.D.	N.D.	N.D.	5 mg/kg
Tribromobiphenyl	N.D.	N.D.	N.D.	5 mg/kg
Tetrabromobiphenyl	N.D.	N.D.	N.D.	5 mg/kg
Pentabromobiphenyl	N.D.	N.D.	N.D.	5 mg/kg
Hexabromobiphenyl	N.D.	N.D.	N.D.	5 mg/kg
Heptabromobiphenyl	N.D.	N.D.	N.D.	5 mg/kg
Octabromobiphenyl	N.D.	N.D.	N.D.	5 mg/kg
Nonabromobiphenyl	N.D.	N.D.	N.D.	5 mg/kg
Decabromobiphenyl	N.D.	N.D.	N.D.	5 mg/kg

Test Report

Report No. A2260097869101

Page 11 of 27

Tested Item(s)	Result			MDL
	007	008	009	
Polybrominated Biphenyls (PBBs)				
Monobromobiphenyl	N.D.	N.D.	N.D.	5 mg/kg
Dibromobiphenyl	N.D.	N.D.	N.D.	5 mg/kg
Tribromobiphenyl	N.D.	N.D.	N.D.	5 mg/kg
Tetrabromobiphenyl	N.D.	N.D.	N.D.	5 mg/kg
Pentabromobiphenyl	N.D.	N.D.	N.D.	5 mg/kg
Hexabromobiphenyl	N.D.	N.D.	N.D.	5 mg/kg
Heptabromobiphenyl	N.D.	N.D.	N.D.	5 mg/kg
Octabromobiphenyl	N.D.	N.D.	N.D.	5 mg/kg
Nonabromobiphenyl	N.D.	N.D.	N.D.	5 mg/kg
Decabromobiphenyl	N.D.	N.D.	N.D.	5 mg/kg

Tested Item(s)	Result			MDL
	001	002	003	
Polybrominated Diphenyl Ethers (PBDEs)				
Monobromodiphenyl ether	N.D.	N.D.	N.D.	5 mg/kg
Dibromodiphenyl ether	N.D.	N.D.	N.D.	5 mg/kg
Tribromodiphenyl ether	N.D.	N.D.	N.D.	5 mg/kg
Tetrabromodiphenyl ether	N.D.	N.D.	N.D.	5 mg/kg
Pentabromodiphenyl ether	N.D.	N.D.	N.D.	5 mg/kg
Hexabromodiphenyl ether	N.D.	N.D.	N.D.	5 mg/kg
Heptabromodiphenyl ether	N.D.	N.D.	N.D.	5 mg/kg
Octabromodiphenyl ether	N.D.	N.D.	N.D.	5 mg/kg
Nonabromodiphenyl ether	N.D.	N.D.	N.D.	5 mg/kg
Decabromodiphenyl ether	N.D.	N.D.	N.D.	5 mg/kg

Test Report

Report No. A2260097869101

Page 12 of 27

Tested Item(s)	Result			MDL
	004	005	006	
Polybrominated Diphenyl Ethers (PBDEs)				
Monobromodiphenyl ether	N.D.	N.D.	N.D.	5 mg/kg
Dibromodiphenyl ether	N.D.	N.D.	N.D.	5 mg/kg
Tribromodiphenyl ether	N.D.	N.D.	N.D.	5 mg/kg
Tetrabromodiphenyl ether	N.D.	N.D.	N.D.	5 mg/kg
Pentabromodiphenyl ether	N.D.	N.D.	N.D.	5 mg/kg
Hexabromodiphenyl ether	N.D.	N.D.	N.D.	5 mg/kg
Heptabromodiphenyl ether	N.D.	N.D.	N.D.	5 mg/kg
Octabromodiphenyl ether	N.D.	N.D.	N.D.	5 mg/kg
Nonabromodiphenyl ether	N.D.	N.D.	N.D.	5 mg/kg
Decabromodiphenyl ether	N.D.	N.D.	N.D.	5 mg/kg

Tested Item(s)	Result			MDL
	007	008	009	
Polybrominated Diphenyl Ethers (PBDEs)				
Monobromodiphenyl ether	N.D.	N.D.	N.D.	5 mg/kg
Dibromodiphenyl ether	N.D.	N.D.	N.D.	5 mg/kg
Tribromodiphenyl ether	N.D.	N.D.	N.D.	5 mg/kg
Tetrabromodiphenyl ether	N.D.	N.D.	N.D.	5 mg/kg
Pentabromodiphenyl ether	N.D.	N.D.	N.D.	5 mg/kg
Hexabromodiphenyl ether	N.D.	N.D.	N.D.	5 mg/kg
Heptabromodiphenyl ether	N.D.	N.D.	N.D.	5 mg/kg
Octabromodiphenyl ether	N.D.	N.D.	N.D.	5 mg/kg
Nonabromodiphenyl ether	N.D.	N.D.	N.D.	5 mg/kg
Decabromodiphenyl ether	N.D.	N.D.	N.D.	5 mg/kg

Test Report

Report No. A2260097869101

Page 13 of 27

Tested Item(s)	Result			MDL
	001	002	003	
Phthalates (DBP, BBP, DEHP, DIBP)				
Dibutyl phthalate (DBP) CAS#:84-74-2	N.D.	N.D.	N.D.	50 mg/kg
Butyl benzyl phthalate (BBP) CAS#:85-68-7	N.D.	N.D.	N.D.	50 mg/kg
Di-(2-ethylhexyl) phthalate (DEHP) CAS#:117-81-7	N.D.	N.D.	N.D.	50 mg/kg
Diisobutyl phthalate (DIBP) CAS#:84-69-5	N.D.	N.D.	N.D.	50 mg/kg

Tested Item(s)	Result			MDL
	004	005	006	
Phthalates (DBP, BBP, DEHP, DIBP)				
Dibutyl phthalate (DBP) CAS#:84-74-2	N.D.	N.D.	N.D.	50 mg/kg
Butyl benzyl phthalate (BBP) CAS#:85-68-7	N.D.	N.D.	N.D.	50 mg/kg
Di-(2-ethylhexyl) phthalate (DEHP) CAS#:117-81-7	N.D.	N.D.	N.D.	50 mg/kg
Diisobutyl phthalate (DIBP) CAS#:84-69-5	N.D.	N.D.	N.D.	50 mg/kg

Tested Item(s)	Result			MDL
	007	008	009	
Phthalates (DBP, BBP, DEHP, DIBP)				
Dibutyl phthalate (DBP) CAS#:84-74-2	N.D.	N.D.	N.D.	50 mg/kg
Butyl benzyl phthalate (BBP) CAS#:85-68-7	N.D.	N.D.	N.D.	50 mg/kg
Di-(2-ethylhexyl) phthalate (DEHP) CAS#:117-81-7	N.D.	N.D.	N.D.	50 mg/kg
Diisobutyl phthalate (DIBP) CAS#:84-69-5	N.D.	N.D.	N.D.	50 mg/kg

Test Report

Report No. A2260097869101

Page 14 of 27

Tested Item(s)	Result			MDL
	001	002	003	
Polycyclic Aromatic Hydrocarbons (PAHs)				
Naphthalene	N.D.	N.D.	N.D.	0.2 mg/kg
Phenanthrene	N.D.	N.D.	N.D.	0.2 mg/kg
Anthracene	N.D.	N.D.	N.D.	0.2 mg/kg
Fluoranthene	N.D.	N.D.	N.D.	0.2 mg/kg
Pyrene	N.D.	N.D.	N.D.	0.2 mg/kg
Chrysene	N.D.	N.D.	N.D.	0.2 mg/kg
Benzo(a)anthracene	N.D.	N.D.	N.D.	0.2 mg/kg
Benzo(b)fluoranthene	N.D.	N.D.	N.D.	0.2 mg/kg
Benzo(k)fluoranthene	N.D.	N.D.	N.D.	0.2 mg/kg
Benzo(j)fluoranthene	N.D.	N.D.	N.D.	0.2 mg/kg
Benzo(a)pyrene	N.D.	N.D.	N.D.	0.2 mg/kg
Benzo(e)pyrene	N.D.	N.D.	N.D.	0.2 mg/kg
Dibenzo(a,h)anthracene	N.D.	N.D.	N.D.	0.2 mg/kg
Benzo(g,h,i)perylene	N.D.	N.D.	N.D.	0.2 mg/kg
Indeno(1,2,3-cd)pyrene	N.D.	N.D.	N.D.	0.2 mg/kg
Acenaphthene	N.D.	N.D.	N.D.	0.2 mg/kg
Fluorene	N.D.	N.D.	N.D.	0.2 mg/kg
Acenaphthylene	N.D.	N.D.	N.D.	0.2 mg/kg
Sum 18 PAHs	N.D.	N.D.	N.D.	/

Test Report

Report No. A2260097869101

Page 15 of 27

Tested Item(s)	Result			MDL
	004	005	006	
Polycyclic Aromatic Hydrocarbons (PAHs)				
Naphthalene	N.D.	N.D.	N.D.	0.2 mg/kg
Phenanthrene	N.D.	N.D.	N.D.	0.2 mg/kg
Anthracene	N.D.	N.D.	N.D.	0.2 mg/kg
Fluoranthene	N.D.	N.D.	N.D.	0.2 mg/kg
Pyrene	N.D.	N.D.	N.D.	0.2 mg/kg
Chrysene	N.D.	N.D.	N.D.	0.2 mg/kg
Benzo(a)anthracene	N.D.	N.D.	N.D.	0.2 mg/kg
Benzo(b)fluoranthene	N.D.	N.D.	N.D.	0.2 mg/kg
Benzo(k)fluoranthene	N.D.	N.D.	N.D.	0.2 mg/kg
Benzo(j)fluoranthene	N.D.	N.D.	N.D.	0.2 mg/kg
Benzo(a)pyrene	N.D.	N.D.	N.D.	0.2 mg/kg
Benzo(e)pyrene	N.D.	N.D.	N.D.	0.2 mg/kg
Dibenzo(a,h)anthracene	N.D.	N.D.	N.D.	0.2 mg/kg
Benzo(g,h,i)perylene	N.D.	N.D.	N.D.	0.2 mg/kg
Indeno(1,2,3-cd)pyrene	N.D.	N.D.	N.D.	0.2 mg/kg
Acenaphthene	N.D.	N.D.	N.D.	0.2 mg/kg
Fluorene	N.D.	N.D.	N.D.	0.2 mg/kg
Acenaphthylene	N.D.	N.D.	N.D.	0.2 mg/kg
Sum 18 PAHs	N.D.	N.D.	N.D.	/

Test Report

Report No. A2260097869101

Page 16 of 27

Tested Item(s)	Result			MDL
	007	008	009	
Polycyclic Aromatic Hydrocarbons (PAHs)				
Naphthalene	N.D.	N.D.	N.D.	0.2 mg/kg
Phenanthrene	N.D.	N.D.	N.D.	0.2 mg/kg
Anthracene	N.D.	N.D.	N.D.	0.2 mg/kg
Fluoranthene	N.D.	N.D.	N.D.	0.2 mg/kg
Pyrene	N.D.	N.D.	N.D.	0.2 mg/kg
Chrysene	N.D.	N.D.	N.D.	0.2 mg/kg
Benzo(a)anthracene	N.D.	N.D.	N.D.	0.2 mg/kg
Benzo(b)fluoranthene	N.D.	N.D.	N.D.	0.2 mg/kg
Benzo(k)fluoranthene	N.D.	N.D.	N.D.	0.2 mg/kg
Benzo(j)fluoranthene	N.D.	N.D.	N.D.	0.2 mg/kg
Benzo(a)pyrene	N.D.	N.D.	N.D.	0.2 mg/kg
Benzo(e)pyrene	N.D.	N.D.	N.D.	0.2 mg/kg
Dibenzo(a,h)anthracene	N.D.	N.D.	N.D.	0.2 mg/kg
Benzo(g,h,i)perylene	N.D.	N.D.	N.D.	0.2 mg/kg
Indeno(1,2,3-cd)pyrene	N.D.	N.D.	N.D.	0.2 mg/kg
Acenaphthene	N.D.	N.D.	N.D.	0.2 mg/kg
Fluorene	N.D.	N.D.	N.D.	0.2 mg/kg
Acenaphthylene	N.D.	N.D.	N.D.	0.2 mg/kg
Sum 18 PAHs	N.D.	N.D.	N.D.	/

Tested Item(s)	Result			MDL
	001	002	003	
Tetrabromobisphenol A (TBBP-A)	N.D.	N.D.	N.D.	5 mg/kg

Tested Item(s)	Result			MDL
	004	005	006	
Tetrabromobisphenol A (TBBP-A)	N.D.	N.D.	N.D.	5 mg/kg

Tested Item(s)	Result			MDL
	007	008	009	
Tetrabromobisphenol A (TBBP-A)	N.D.	N.D.	N.D.	5 mg/kg

Test Report

Report No. A2260097869101

Page 17 of 27

Tested Item(s)	Result			MDL
	001	002	003	
Halogen(s)				
Fluorine (F)	N.D.	N.D.	N.D.	10 mg/kg
Chlorine (Cl)	N.D.	N.D.	N.D.	10 mg/kg
Bromine (Br)	N.D.	N.D.	N.D.	10 mg/kg
Iodine (I)	N.D.	N.D.	N.D.	10 mg/kg

Tested Item(s)	Result			MDL
	004	005	006	
Halogen(s)				
Fluorine (F)	N.D.	N.D.	N.D.	10 mg/kg
Chlorine (Cl)	N.D.	N.D.	N.D.	10 mg/kg
Bromine (Br)	N.D.	N.D.	N.D.	10 mg/kg
Iodine (I)	N.D.	N.D.	N.D.	10 mg/kg

Tested Item(s)	Result			MDL
	007	008	009	
Halogen(s)				
Fluorine (F)	N.D.	72 mg/kg	N.D.	10 mg/kg
Chlorine (Cl)	N.D.	N.D.	N.D.	10 mg/kg
Bromine (Br)	N.D.	N.D.	N.D.	10 mg/kg
Iodine (I)	N.D.	N.D.	N.D.	10 mg/kg

Tested Item(s)	Result			MDL
	001	002	003	
Perfluorooctane Sulfonates (PFOS)	N.D.	N.D.	N.D.	0.01 mg/kg

Tested Item(s)	Result			MDL
	004	005	006	
Perfluorooctane Sulfonates (PFOS)	N.D.	N.D.	N.D.	0.01 mg/kg

Tested Item(s)	Result			MDL
	007	008	009	
Perfluorooctane Sulfonates (PFOS)	N.D.	N.D.	N.D.	0.01 mg/kg

Test Report

Report No. A2260097869101

Page 18 of 27

Tested Item(s)	Result			MDL
	001	002	003	
Phthalates				
Dibutyl phthalate (DBP) CAS#:84-74-2	N.D.	N.D.	N.D.	50 mg/kg
Butyl benzyl phthalate (BBP) CAS#:85-68-7	N.D.	N.D.	N.D.	50 mg/kg
Di-(2-ethylhexyl) phthalate (DEHP) CAS#:117-81-7	N.D.	N.D.	N.D.	50 mg/kg
Di-n-octyl phthalate (DNOP) CAS#:117-84-0	N.D.	N.D.	N.D.	50 mg/kg
Di-isononyl phthalate (DINP) CAS#:28553-12-0, 68515-48-0	N.D.	N.D.	N.D.	50 mg/kg
Di-iso-decyl phthalate (DIDP) CAS#:26761-40-0, 68515-49-1	N.D.	N.D.	N.D.	50 mg/kg
Dimethyl phthalate (DMP) CAS#:131-11-3	N.D.	N.D.	N.D.	50 mg/kg
Diethyl phthalate (DEP) CAS#:84-66-2	N.D.	N.D.	N.D.	50 mg/kg
Dipropyl phthalate (DPrP) CAS#:131-16-8	N.D.	N.D.	N.D.	50 mg/kg
Diisobutyl phthalate (DIBP) CAS#:84-69-5	N.D.	N.D.	N.D.	50 mg/kg
Dipentyl phthalate (DPP/DPENP) CAS#:131-18-0	N.D.	N.D.	N.D.	50 mg/kg
Diheptyl phthalate (DHP) CAS#:3648-21-3	N.D.	N.D.	N.D.	50 mg/kg
Dicyclohexyl phthalate (DCHP) CAS#:84-61-7	N.D.	N.D.	N.D.	50 mg/kg
Diisooctyl phthalate (DIOP) CAS#:27554-26-3	N.D.	N.D.	N.D.	50 mg/kg
Dinonyl phthalate (DNP) CAS#:84-76-4	N.D.	N.D.	N.D.	50 mg/kg
Diisononyl adipate (DINA) CAS#:33703-08-1	N.D.	N.D.	N.D.	50 mg/kg

Test Report

Report No. A2260097869101

Page 19 of 27

Tested Item(s)	Result			MDL
	004	005	006	
Phthalates				
Dibutyl phthalate (DBP) CAS#:84-74-2	N.D.	N.D.	N.D.	50 mg/kg
Butyl benzyl phthalate (BBP) CAS#:85-68-7	N.D.	N.D.	N.D.	50 mg/kg
Di-(2-ethylhexyl) phthalate (DEHP) CAS#:117-81-7	N.D.	N.D.	N.D.	50 mg/kg
Di-n-octyl phthalate (DNOP) CAS#:117-84-0	N.D.	N.D.	N.D.	50 mg/kg
Di-isononyl phthalate (DINP) CAS#:28553-12-0, 68515-48-0	N.D.	N.D.	N.D.	50 mg/kg
Di-iso-decyl phthalate (DIDP) CAS#:26761-40-0, 68515-49-1	N.D.	N.D.	N.D.	50 mg/kg
Dimethyl phthalate (DMP) CAS#:131-11-3	N.D.	N.D.	N.D.	50 mg/kg
Diethyl phthalate (DEP) CAS#:84-66-2	N.D.	N.D.	N.D.	50 mg/kg
Dipropyl phthalate (DPrP) CAS#:131-16-8	N.D.	N.D.	N.D.	50 mg/kg
Diisobutyl phthalate (DIBP) CAS#:84-69-5	N.D.	N.D.	N.D.	50 mg/kg
Dipentyl phthalate (DPP/DPENP) CAS#:131-18-0	N.D.	N.D.	N.D.	50 mg/kg
Diheptyl phthalate (DHP) CAS#:3648-21-3	N.D.	N.D.	N.D.	50 mg/kg
Dicyclohexyl phthalate (DCHP) CAS#:84-61-7	N.D.	N.D.	N.D.	50 mg/kg
Diisooctyl phthalate (DIOP) CAS#:27554-26-3	N.D.	N.D.	N.D.	50 mg/kg
Dinonyl phthalate (DNP) CAS#:84-76-4	N.D.	N.D.	N.D.	50 mg/kg
Diisononyl adipate (DINA) CAS#:33703-08-1	N.D.	N.D.	N.D.	50 mg/kg

Test Report

Report No. A2260097869101

Page 20 of 27

Tested Item(s)	Result			MDL
	007	008	009	
Phthalates				
Dibutyl phthalate (DBP) CAS#:84-74-2	N.D.	N.D.	N.D.	50 mg/kg
Butyl benzyl phthalate (BBP) CAS#:85-68-7	N.D.	N.D.	N.D.	50 mg/kg
Di-(2-ethylhexyl) phthalate (DEHP) CAS#:117-81-7	N.D.	N.D.	N.D.	50 mg/kg
Di-n-octyl phthalate (DNOP) CAS#:117-84-0	N.D.	N.D.	N.D.	50 mg/kg
Di-isononyl phthalate (DINP) CAS#:28553-12-0, 68515-48-0	N.D.	N.D.	N.D.	50 mg/kg
Di-iso-decyl phthalate (DIDP) CAS#:26761-40-0, 68515-49-1	N.D.	N.D.	N.D.	50 mg/kg
Dimethyl phthalate (DMP) CAS#:131-11-3	N.D.	N.D.	N.D.	50 mg/kg
Diethyl phthalate (DEP) CAS#:84-66-2	N.D.	N.D.	N.D.	50 mg/kg
Dipropyl phthalate (DPrP) CAS#:131-16-8	N.D.	N.D.	N.D.	50 mg/kg
Diisobutyl phthalate (DIBP) CAS#:84-69-5	N.D.	N.D.	N.D.	50 mg/kg
Dipentyl phthalate (DPP/DPENP) CAS#:131-18-0	N.D.	N.D.	N.D.	50 mg/kg
Diheptyl phthalate (DHP) CAS#:3648-21-3	N.D.	N.D.	N.D.	50 mg/kg
Dicyclohexyl phthalate (DCHP) CAS#:84-61-7	N.D.	N.D.	N.D.	50 mg/kg
Diisooctyl phthalate (DIOP) CAS#:27554-26-3	N.D.	N.D.	N.D.	50 mg/kg
Dinonyl phthalate (DNP) CAS#:84-76-4	N.D.	N.D.	N.D.	50 mg/kg
Diisononyl adipate (DINA) CAS#:33703-08-1	N.D.	N.D.	N.D.	50 mg/kg

Test Report

Report No. A2260097869101

Page 21 of 27

Tested Item(s)	Result			MDL
	001	002	003	
Red phosphorus	N.D.	N.D.	N.D.	500 mg/kg

Tested Item(s)	Result			MDL
	004	005	006	
Red phosphorus	N.D.	N.D.	N.D.	500 mg/kg

Tested Item(s)	Result			MDL
	007	008	009	
Red phosphorus	N.D.	N.D.	N.D.	500 mg/kg

Sample/Part Description

No.	CTI Sample ID	Description
1	001	Black plastic grains
2	002	White plastic grains
3	003	Brown plastic grains
4	004	Blue plastic grains
5	005	Yellow plastic grains
6	006	Green plastic grains
7	007	Grey plastic grains
8	008	White plastic
9	009	Black plastic
10	010	Cupreous metal
11	011	Metal with silvery plating
12	012	Brassy metal

Remark: The sample(s) had been dissolved totally tested for Lead, Cadmium, Mercury.

-MDL = Method Detection Limit

-N.D. = Not Detected (<MDL or LOQ)

-mg/kg = ppm = parts per million

-LOQ = Limit of Quantification, The LOQ of Hexavalent chromium is 0.10 $\mu\text{g}/\text{cm}^2$

- ∇ The sample is negative for Cr(VI) – The Cr(VI) concentration is below 0.10 $\mu\text{g}/\text{cm}^2$. The coating is considered a non-Cr(VI) based coating. Information on storage conditions and production date of the tested sample is unavailable and thus Cr(VI) results represent status of the sample at the time of testing.

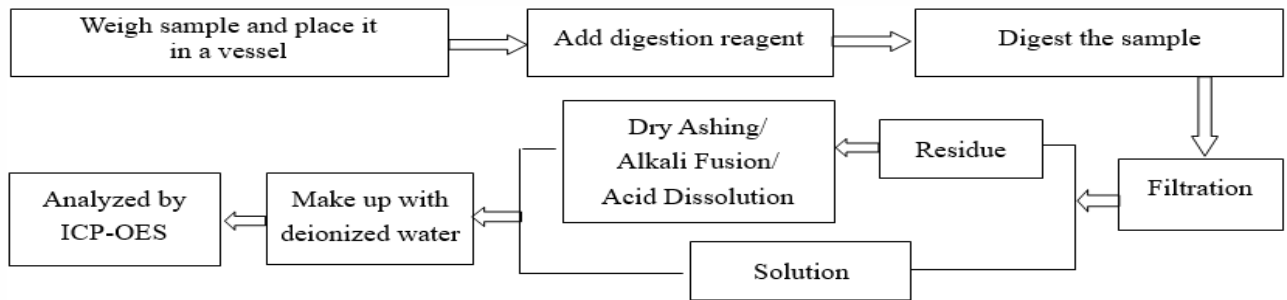
Test Report

Report No. A2260097869101

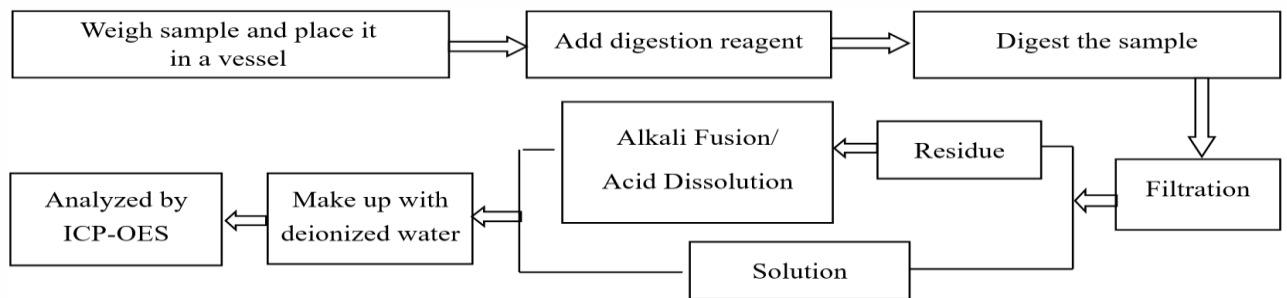
Page 22 of 27

2.3 Test Process

2.3.1. Lead (Pb), Cadmium (Cd), Chromium(Cr)

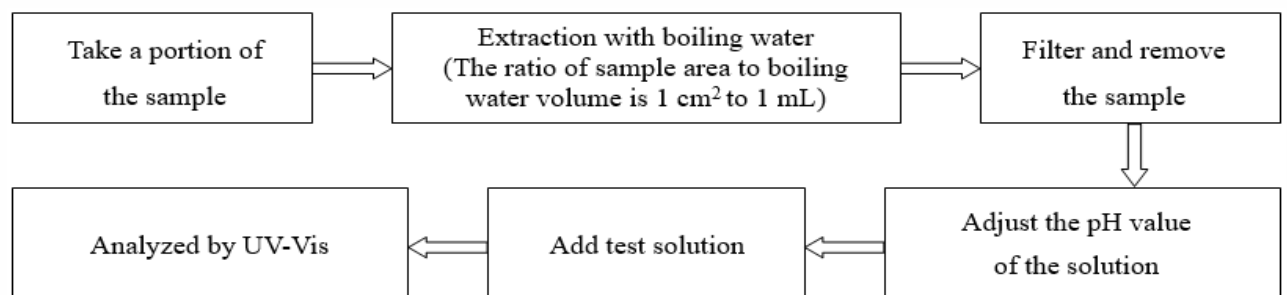


2.3.2. Mercury (Hg)

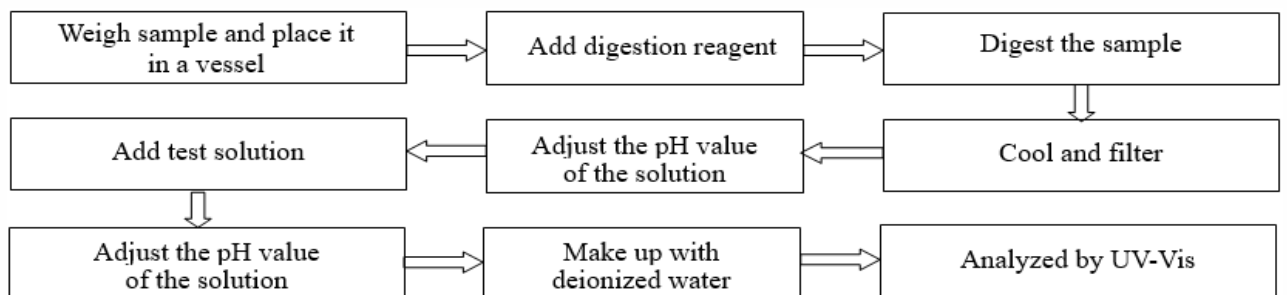


2.3.3. Hexavalent Chromium (Cr(VI))

(1) IEC 62321-7-1:2015



(2) IEC 62321-7-2:2017

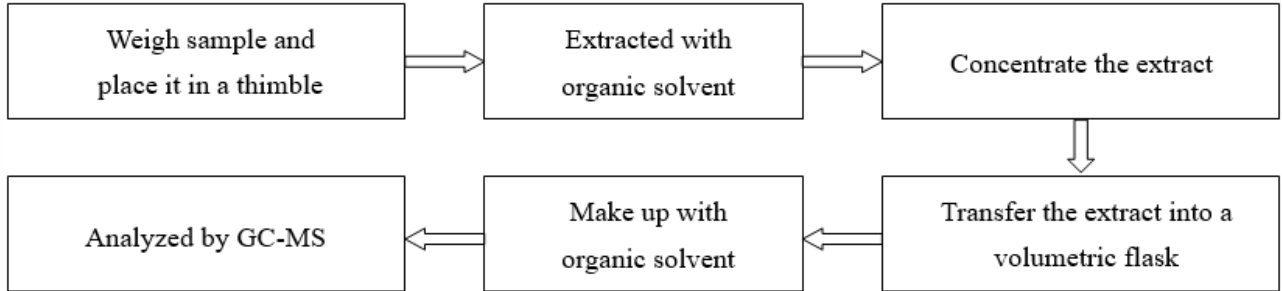


Test Report

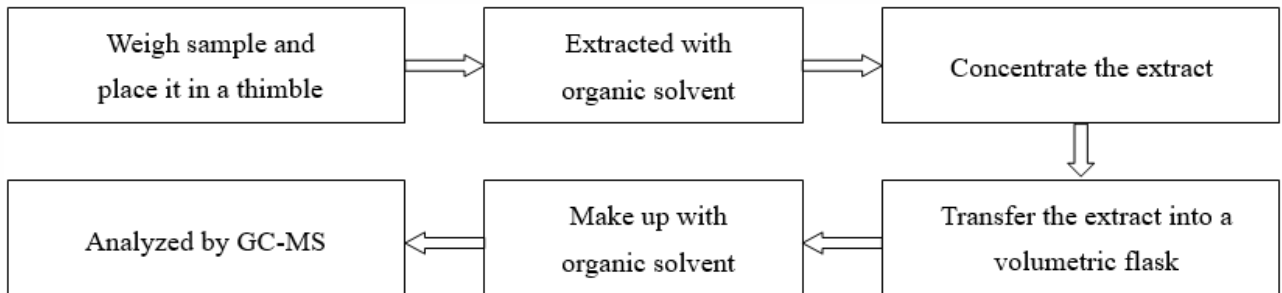
Report No. A2260097869101

Page 23 of 27

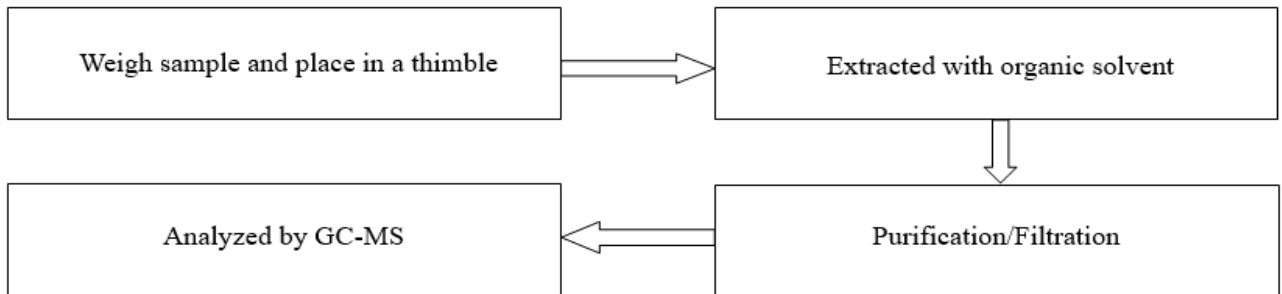
2.3.4. Polybrominated Biphenyls (PBBs), Polybrominated Diphenyl Ethers (PBDEs)



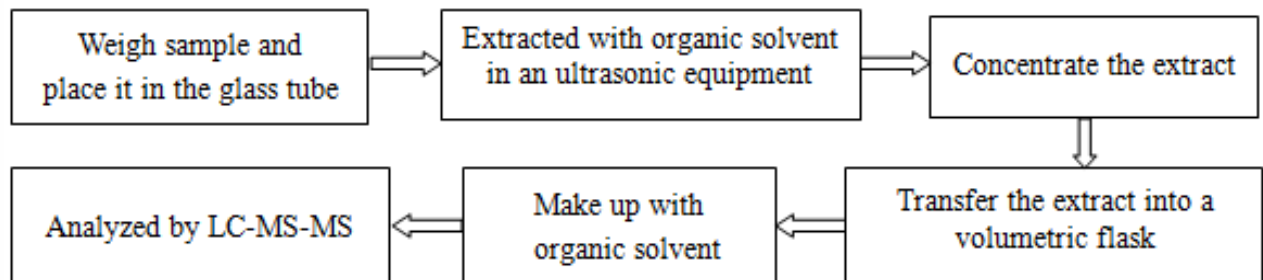
2.3.5. Phthalates (DBP, BBP, DEHP, DIBP)



2.3.6. Polycyclic Aromatic Hydrocarbons (PAHs)



2.3.7. Tetrabromobisphenol A (TBBP-A)

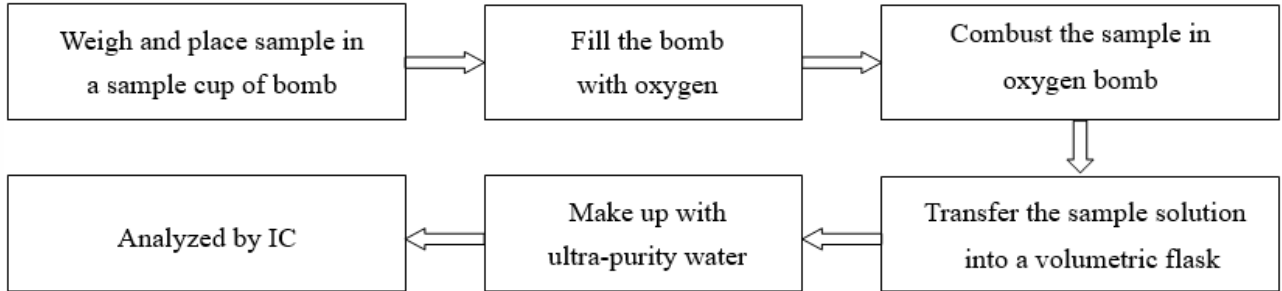


Test Report

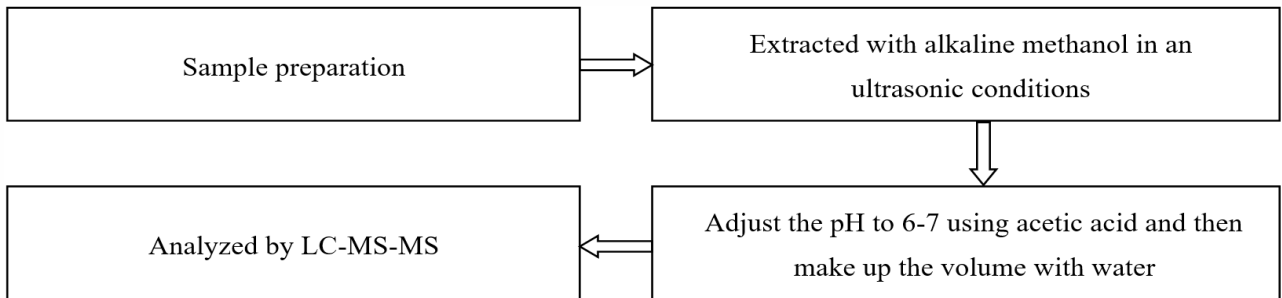
Report No. A2260097869101

Page 24 of 27

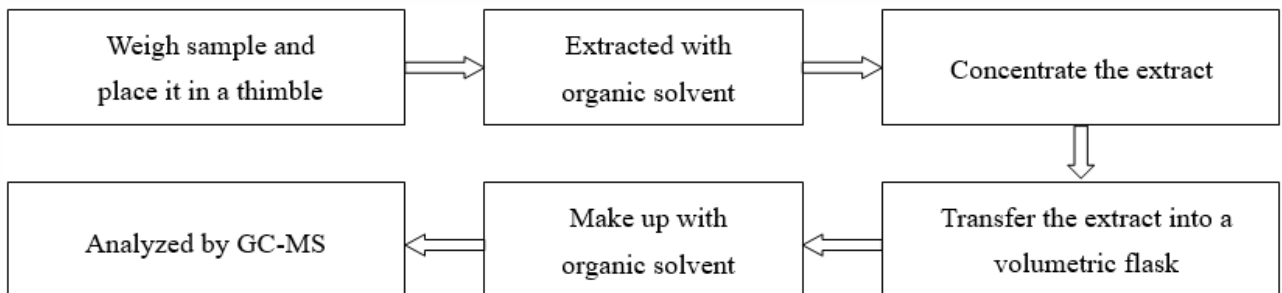
2.3.8. Halogen(s)



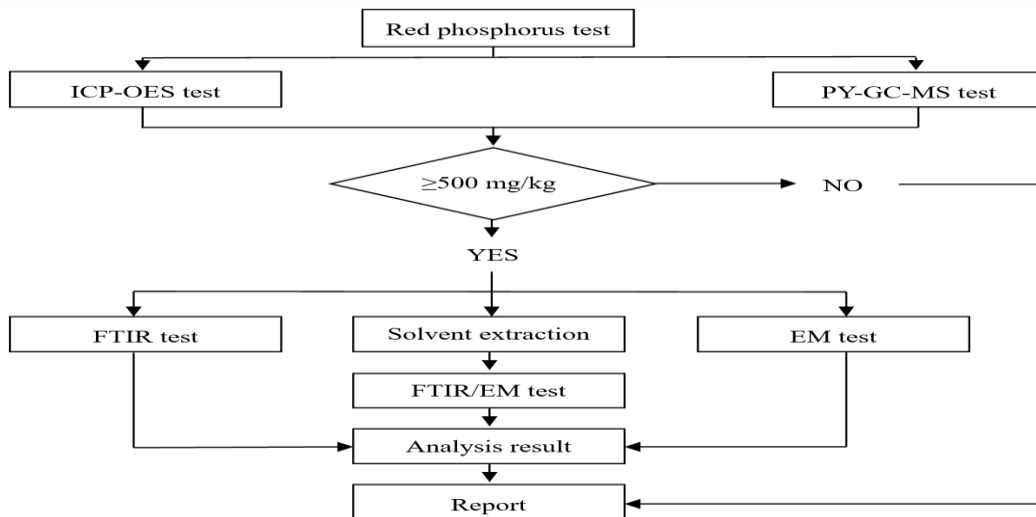
2.3.9. Perfluorooctane Sulfonates(PFOS)



2.3.10. Phthalates



2.3.11. Red phosphorus



Test Report

Report No. A2260097869101

Page 25 of 27

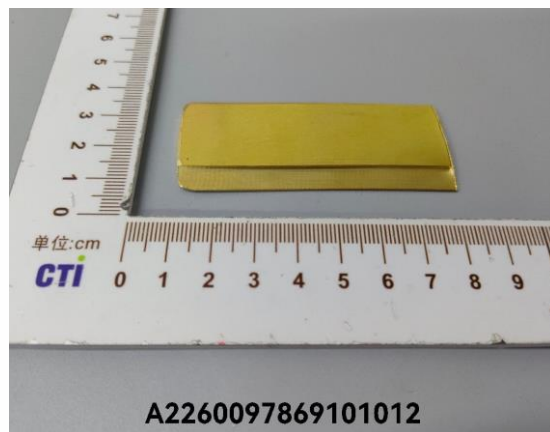
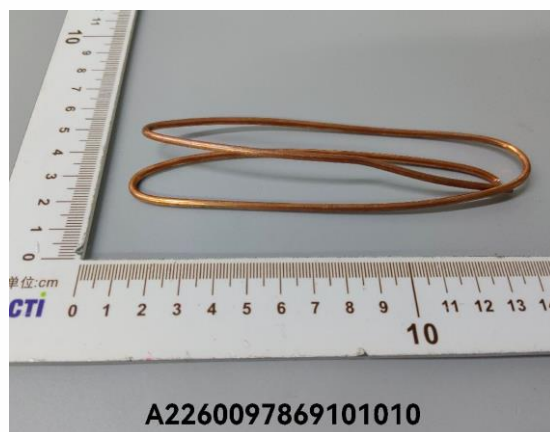
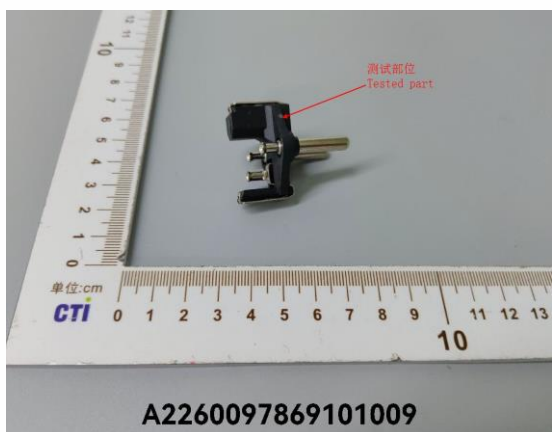
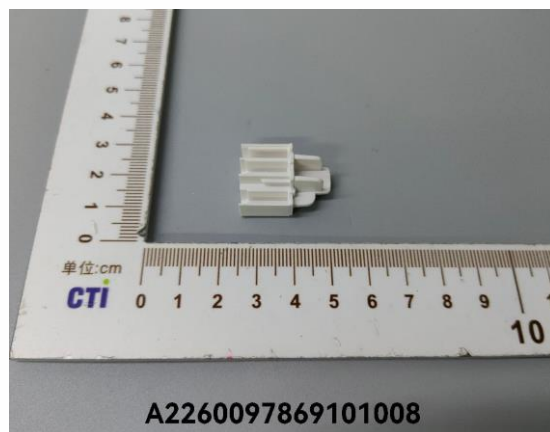
Photo(s) of the sample(s)



Test Report

Report No. A2260097869101

Page 26 of 27



Test Report

Report No. A2260097869101

Page 27 of 27

Statement:

1. This report is considered invalid without approved signature, special seal and the seal on the perforation;
2. The Company Name shown on Report and Address, the sample(s) and sample information was/were provided by the applicant who should be responsible for the authenticity which CTI hasn't verified;
3. The result(s) shown in this report refer(s) only to the sample(s) tested;
4. Unless otherwise stated, the decision rule for conformity reporting is based on Binary Statement for Simple Acceptance Rule (w=0) stated in ILAC-G8:09/2019 / CNAS-GL015:2022;
5. Without written approval of CTI, this report can't be reproduced except in full;
6. In case of any discrepancy between the English version and Chinese version of the testing reports (if generated), the Chinese version shall prevail.

*** End of Report ***

Appendix

Client Reference Information

AC POWER CORD

YP-01	YP-16	YP-55	YP-96L	YC-04	YC-13G	YC-52	YC-12Z
YP-12L-10	YP-16L	YP-56	YP-97L	YC-05	YC-13L	YC-52A	YC-13Z
YP-12L-11	YP-16H	YP-58	YP-98L	YC-05-1	YC-13LG	YC-53	YC-14Z
YP-06	YP-16HL	YP-58N	YP-99L	YC-05A	YC-14	YC-54	YC-12LZ
YP-07	YP-16C	YP-61A	YP-103L	YC-05B	YC-14G	YC-55	YC-13LZ
YP-08	YP-17	YP-62	YL-915	YC-05C	YC-14L	YC-55A	YC-14LZ
YP-09	YP-17L	YP-64	YL-921B	YC-05E	YC-14GL	YC-56	YC-18LZ
YP-10	YP-17H	YP-65	YP-46Z	YC-05F	YC-15	YC-58	
YP-11	YP-17HL	YP-66	YP-107	YC-05L	YC-15A	YC-62	SR 系列
YP-11A	YP-17C	YP-67	YP-108	YC-06	YC-16	YC-64	
YP-11B	YP-18	YP-68L	YP-109	YC-06R	YC-17	YC-72	
YP-11C	YP-18A	YP-69L		YC-07	YC-18	YC-73L	
YP-11K	YP-18B	YP-72L		YC-08	YC-18L	YC-77	
YP-11L	YP-18L	YP-73L		YC-11	YC-18A	YC-77A	
YP-11L-9	YP-18N	YP-74L		YC-11GL	YC-18Z	YC-79	
YP-11W	YP-18T	YP-75L		YC-12	YC-19	YC-79A	
YP-11P	YP-18G	YP-76		YC-12A	YC-20	YC-07A	
YP-11T	YP-19	YP-77		YC-12C	YC-20D1	YC-12E	
YP-11R	YP-19L	YP-78		YC-12D	YC-20L	YC-18E	
YP-11K	YP-19H	YP-79		YC-12G	YC-20L-1	YC-15E	
YP-11F	YP-19HL	YP-82		YC-12K	YC-20LR	YC-25E	
YP-12	YP-19C	YP-83		YC-12L	YC-21	YC-91L	
YP-12A	YP-21Z	YP-84		YC-12LR	YC-21A	YC-92L	
YP-12C	YP-22Z	YP-88L		YC-12-01	YC-21L	YC-93L	
YP-12E	YP-23Z	YP-90L		YC-12GL	YC-21F	YC-75L	
YP-12G	YP-24Z	YP-91L		YC-12HL	YC-25		
YP-12L	YP-32Z	YP-92L		YC-13	YC-25L		
YP-12L-9	YP-33Z	YP-93L		YC-13C	YC-12GLR		
YP-12N	YP-52	YP-94L		YC-13D	YC-12G+E		
YP-12P	YP-53	YP-95L		YC-13W			
YP-12D	YP-54	YP-33A		YC-13E			
YP-33	YP-32F	YP-33B					
YP-32A	YP-33AL						
YP-32L	YP-32BL						
YP-31	YP-32BL						

Client Reference Photo (Non-tested sample)



Statement:

1. The Appendix Information was/were provided by the applicant who should be responsible for the authenticity which CTI hasn't verified.
2. The Appendix Information is/are the supplement(s) for the Report A2260097869101.