



Test Report

Report No. A2250764973101R1

Page 1 of 30

Company Name YUNG LI CO.,LTD**shown on Report****Address** NO. 32, DAPU INDUSTRIAL ST.,CHANGPING TOWN, DONGGUAN
CITY,GUANGDONG PROVINCE,CHINA 523571

The following sample(s) and sample information was/were submitted and identified by/on the behalf of the applicant

CTI Sample ID	Sample Name	Material
001	POWER CORD & PLUG ADAPTERS	PVC BLACK
002		PVC WHITE
003		PVC BROWN
004		PVC BLUE
005		PVC YELLOW
006		PVC GREEN
007		PVC RED
008		PVC ORANGE
009		INK
010		CABLE COPPER
011		INNERBODY
012		COPPER ALLOY
013		TERMINAL COPPER
A2250825578101002		PVC GREEN

Sample Received Date Oct. 17, 2025

Testing Period Oct. 17, 2025 to Nov. 18, 2025

Test Conducted:

As requested by the applicant. For details refer to next page(s)



Approved by

Yuan Huilong

Date

Nov. 18, 2025

Yuan Huilong
Lab Authorized Signatory

No. B311141949

Centre Testing International (Ningbo) Co.,Ltd.

1-2F, Eastern Factory, No.76, Jinghua Road, High-Tech Zone, Ningbo, Zhejiang, China

Test Report

Report No. A2250764973101R1

Page 2 of 30

Executive Summary:**TEST REQUEST****CONCLUSION**

- | | |
|--|---------------------------|
| 1. Persistent, Bioaccumulative, and Toxic (PBT) Chemicals under US EPA Toxic Substances Control Act (TSCA) Section 6(h) | |
| - Decabromodiphenyl Ether (DecaBDE) | PASS |
| - Phenol, Isopropylated Phosphate (PIP (3:1)) | PASS |
| - 2,4,6-tris(tert-butyl) phenol (2,4,6-TTBP) | PASS |
| - Hexachlorobutadiene (HCBD) | PASS |
| - Pentachlorothiophenol (PCTP) | PASS |
| 2. As specified by client, to test Lead (Pb), Cadmium (Cd), Mercury (Hg), Hexavalent Chromium (Cr(VI)), Polybrominated Biphenyls (PBBs), Polybrominated Diphenyl Ethers (PBDEs), Phthalates, Polycyclic Aromatic Hydrocarbons (PAHs), Tetrabromobisphenol A (TBBP-A), Perfluorooctane Sulfonates(PFOS), Red phosphorus in the submitted sample(s). | See test result(s) |

***** For further details, please refer to the following page(s) *****

Test Report

Report No. A2250764973101R1

Page 3 of 30

1.1 Persistent, Bioaccumulative, and Toxic (PBT) Chemicals under US EPA Toxic Substances Control Act (TSCA) Section 6(h)

▼ Decabromodiphenyl Ether (DecaBDE)

Test Method: Refer to US EPA 3550C:2007 & US EPA 8270E:2018; Test Equipment: GC-MS

<u>Tested Item(s)</u>	<u>Result (mg/kg)</u>			<u>MDL</u> (mg/kg)	<u>Limit</u> (mg/kg)
	001	002	003		
Decabromodiphenyl Ether (DecaBDE)	N.D.	N.D.	N.D.	5	1000

<u>Tested Item(s)</u>	<u>Result (mg/kg)</u>			<u>MDL</u> (mg/kg)	<u>Limit</u> (mg/kg)
	004	005	006		
Decabromodiphenyl Ether (DecaBDE)	N.D.	N.D.	N.D.	5	1000

<u>Tested Item(s)</u>	<u>Result (mg/kg)</u>			<u>MDL</u> (mg/kg)	<u>Limit</u> (mg/kg)
	007	008	009		
Decabromodiphenyl Ether (DecaBDE)	N.D.	N.D.	N.D.	5	1000

<u>Tested Item(s)</u>	<u>Result (mg/kg)</u>	<u>MDL</u> (mg/kg)	<u>Limit</u> (mg/kg)
	011		
Decabromodiphenyl Ether (DecaBDE)	N.D.	5	1000

Remark:

- MDL = Method Detection Limit
- N.D. = Not Detected (<MDL)
- mg/kg = ppm = parts per million
- The limit applies to the situation where Decabromodiphenyl Ether (DecaBDE) is not intentionally added to the product or article. It is recommended to verify the addition of these substances through the supply chain.

Test Report

Report No. A2250764973101R1

Page 4 of 30

▼ Phenol, Isopropylated Phosphate (PIP (3:1))

Test Method: Refer to US EPA 3550C:2007 & US EPA 8270E:2018; Test Equipment: GC-MS

<u>Tested Item(s)</u>	<u>Result (mg/kg)</u>			<u>MDL</u> (mg/kg)	<u>Limit</u> (mg/kg)
	001	002	003		
Phenol, Isopropylated Phosphate (PIP (3:1))	N.D.	N.D.	N.D.	5	1000

<u>Tested Item(s)</u>	<u>Result (mg/kg)</u>			<u>MDL</u> (mg/kg)	<u>Limit</u> (mg/kg)
	004	005	006		
Phenol, Isopropylated Phosphate (PIP (3:1))	N.D.	N.D.	N.D.	5	1000

<u>Tested Item(s)</u>	<u>Result (mg/kg)</u>			<u>MDL</u> (mg/kg)	<u>Limit</u> (mg/kg)
	007	008	009		
Phenol, Isopropylated Phosphate (PIP (3:1))	N.D.	N.D.	N.D.	5	1000

<u>Tested Item(s)</u>	<u>Result (mg/kg)</u>	<u>MDL</u> (mg/kg)	<u>Limit</u> (mg/kg)
	011		
Phenol, Isopropylated Phosphate (PIP (3:1))	N.D.	5	1000

Remark:

- MDL = Method Detection Limit
- N.D. = Not Detected (<MDL)
- mg/kg = ppm = parts per million
- The limit applies to the situation where Phenol, Isopropylated Phosphate (PIP (3:1)) is not intentionally added to the product or article. It is recommended to verify the addition of these substances through the supply chain.

Test Report

Report No. A2250764973101R1

Page 5 of 30

▼ **2,4,6-tris(tert-butyl) phenol (2,4,6-TTBP)**

Test Method: Refer to US EPA 3550C:2007 & US EPA 8270E:2018; Test Equipment: GC-MS

<u>Tested Item(s)</u>	<u>Result (mg/kg)</u>			<u>MDL</u> (mg/kg)	<u>Limit</u> (mg/kg)
	001	002	003		
2,4,6-tris(tert-butyl) phenol (2,4,6-TTBP)	N.D.	N.D.	N.D.	5	3000

<u>Tested Item(s)</u>	<u>Result (mg/kg)</u>			<u>MDL</u> (mg/kg)	<u>Limit</u> (mg/kg)
	004	005	006		
2,4,6-tris(tert-butyl) phenol (2,4,6-TTBP)	N.D.	N.D.	N.D.	5	3000

<u>Tested Item(s)</u>	<u>Result (mg/kg)</u>			<u>MDL</u> (mg/kg)	<u>Limit</u> (mg/kg)
	007	008	009		
2,4,6-tris(tert-butyl) phenol (2,4,6-TTBP)	N.D.	N.D.	N.D.	5	3000

<u>Tested Item(s)</u>	<u>Result (mg/kg)</u>			<u>MDL</u> (mg/kg)	<u>Limit</u> (mg/kg)
	011				
2,4,6-tris(tert-butyl) phenol (2,4,6-TTBP)	N.D.			5	3000

Remark:

- MDL = Method Detection Limit
- N.D. = Not Detected (<MDL)
- mg/kg = ppm = parts per million

Test Report

Report No. A2250764973101R1

Page 6 of 30

▼ **Hexachlorobutadiene (HCBD)**

Test Method: Refer to US EPA 3550C:2007 & US EPA 8270E:2018; Test Equipment: GC-MS

<u>Tested Item(s)</u>	<u>Result (mg/kg)</u>			<u>MDL</u> (mg/kg)	<u>Limit</u> (mg/kg)
	001	002	003		
Hexachlorobutadiene (HCBD)	N.D.	N.D.	N.D.	5	N.D.

<u>Tested Item(s)</u>	<u>Result (mg/kg)</u>			<u>MDL</u> (mg/kg)	<u>Limit</u> (mg/kg)
	004	005	006		
Hexachlorobutadiene (HCBD)	N.D.	N.D.	N.D.	5	N.D.

<u>Tested Item(s)</u>	<u>Result (mg/kg)</u>			<u>MDL</u> (mg/kg)	<u>Limit</u> (mg/kg)
	007	008	009		
Hexachlorobutadiene (HCBD)	N.D.	N.D.	N.D.	5	N.D.

<u>Tested Item(s)</u>	<u>Result (mg/kg)</u>			<u>MDL</u> (mg/kg)	<u>Limit</u> (mg/kg)
	011				
Hexachlorobutadiene (HCBD)	N.D.			5	N.D.

Remark:

- MDL = Method Detection Limit
- N.D. = Not Detected (<MDL)
- mg/kg = ppm = parts per million

Test Report

Report No. A2250764973101R1

Page 7 of 30

▼ Pentachlorothiophenol (PCTP)

Test Method: Refer to US EPA 3550C:2007 & US EPA 8270E:2018; Test Equipment: GC-MS

Tested Item(s)	Result (mg/kg)			MDL (mg/kg)	Limit (mg/kg)
	001	002	003		
Pentachlorothiophenol (PCTP)	N.D.	N.D.	N.D.	5	10000

Tested Item(s)	Result (mg/kg)			MDL (mg/kg)	Limit (mg/kg)
	004	005	006		
Pentachlorothiophenol (PCTP)	N.D.	N.D.	N.D.	5	10000

Tested Item(s)	Result (mg/kg)			MDL (mg/kg)	Limit (mg/kg)
	007	008	009		
Pentachlorothiophenol (PCTP)	N.D.	N.D.	N.D.	5	10000

Tested Item(s)	Result (mg/kg)	MDL (mg/kg)	Limit (mg/kg)
	011		
Pentachlorothiophenol (PCTP)	N.D.	5	10000

Remark:

- MDL = Method Detection Limit
- N.D. = Not Detected (<MDL)
- mg/kg = ppm = parts per million

Sample/Part Description

No.	CTI Sample ID	Description
1	001	Black plastic grains
2	002	White plastic grains
3	003	Brown plastic grains
4	004	Blue plastic grains
5	005	Yellow plastic grains
6	006	Green plastic grains
7	007	Red plastic grains
8	008	Orange plastic grains
9	009	White ink
10	011	White plastic

Test Report

Report No. A2250764973101R1

Page 8 of 30

2.1 Test Method

Tested Item(s)	Test Method	Measured Equipment(s)
Lead (Pb)	IEC 62321-5:2013	ICP-OES
Cadmium (Cd)	IEC 62321-5:2013	ICP-OES
Mercury (Hg)	IEC 62321-4:2013+AMD1:2017 CSV	ICP-OES
Hexavalent Chromium (Cr(VI))	IEC 62321-7-1:2015	UV-Vis
	IEC 62321-7-2:2017 and/or determination of Total Chromium by IEC 62321-5:2013	UV-Vis/ICP-OES
Polybrominated Biphenyls (PBBs)	IEC 62321-6:2015	GC-MS
Polybrominated Diphenyl Ethers (PBDEs)	IEC 62321-6:2015	GC-MS
Phthalates (DBP, BBP, DEHP, DIBP)	IEC 62321-8:2017	GC-MS
Polycyclic Aromatic Hydrocarbons (PAHs)	Refer to AfPS GS 2019:01 PAK	GC-MS
Tetrabromobisphenol A (TBBP-A)	Refer to US EPA 3550C:2007 & US EPA 8321B:2007	LC-MS-MS
Perfluorooctane Sulfonates(PFOS)	Refer to US EPA 3550C:2007 & US EPA 8321B:2007	LC-MS-MS
Phthalates	Refer to EN 14372:2004(E)	GC-MS
Red phosphorus	GB/T 6040-2019, GB/T 9722-2023, GB/T 17359-2023, EPA 6010D:2018	ICP-OES, PY-GC-MS, FTIR, EM

Test Report

Report No. A2250764973101R1

Page 9 of 30

2.2 Test Result(s)

Tested Item(s)	Result			MDL
	001	002	003	
Lead (Pb)	N.D.	N.D.	N.D.	2 mg/kg
Cadmium (Cd)	N.D.	N.D.	N.D.	2 mg/kg
Mercury (Hg)	N.D.	N.D.	N.D.	2 mg/kg
Hexavalent Chromium (Cr(VI))	N.D.	N.D.	N.D.	8 mg/kg
	--	--	--	0.10 µg/cm ² (LOQ)

Tested Item(s)	Result			MDL
	004	005	006	
Lead (Pb)	N.D.	N.D.	N.D.	2 mg/kg
Cadmium (Cd)	N.D.	N.D.	N.D.	2 mg/kg
Mercury (Hg)	N.D.	N.D.	N.D.	2 mg/kg
Hexavalent Chromium (Cr(VI))	N.D.	N.D.	N.D.	8 mg/kg
	--	--	--	0.10 µg/cm ² (LOQ)

Tested Item(s)	Result			MDL
	007	008	009	
Lead (Pb)	N.D.	N.D.	N.D.	2 mg/kg
Cadmium (Cd)	N.D.	N.D.	N.D.	2 mg/kg
Mercury (Hg)	N.D.	N.D.	N.D.	2 mg/kg
Hexavalent Chromium (Cr(VI))	N.D.	N.D.	N.D.	8 mg/kg
	--	--	--	0.10 µg/cm ² (LOQ)

Tested Item(s)	Result			MDL
	010	011	012	
Lead (Pb)	N.D.	N.D.	28196 mg/kg	2 mg/kg
Cadmium (Cd)	N.D.	N.D.	4 mg/kg	2 mg/kg
Mercury (Hg)	N.D.	N.D.	N.D.	2 mg/kg
Hexavalent Chromium (Cr(VI))	--	N.D.	--	8 mg/kg
	N.D.▼	--	N.D.▼	0.10 µg/cm ² (LOQ)

Test Report

Report No. A2250764973101R1

Page 10 of 30

Tested Item(s)	Result	MDL
	013	
Lead (Pb)	58 mg/kg	2 mg/kg
Cadmium (Cd)	N.D.	2 mg/kg
Mercury (Hg)	N.D.	2 mg/kg
Hexavalent Chromium (Cr(VI))	--	8 mg/kg
	N.D.▼	0.10 µg/cm ² (LOQ)

Tested Item(s)	Result			MDL
	001	002	003	
Polybrominated Biphenyls (PBBs)				
Monobromobiphenyl	N.D.	N.D.	N.D.	5 mg/kg
Dibromobiphenyl	N.D.	N.D.	N.D.	5 mg/kg
Tribromobiphenyl	N.D.	N.D.	N.D.	5 mg/kg
Tetrabromobiphenyl	N.D.	N.D.	N.D.	5 mg/kg
Pentabromobiphenyl	N.D.	N.D.	N.D.	5 mg/kg
Hexabromobiphenyl	N.D.	N.D.	N.D.	5 mg/kg
Heptabromobiphenyl	N.D.	N.D.	N.D.	5 mg/kg
Octabromobiphenyl	N.D.	N.D.	N.D.	5 mg/kg
Nonabromobiphenyl	N.D.	N.D.	N.D.	5 mg/kg
Decabromobiphenyl	N.D.	N.D.	N.D.	5 mg/kg

Tested Item(s)	Result			MDL
	004	005	006	
Polybrominated Biphenyls (PBBs)				
Monobromobiphenyl	N.D.	N.D.	N.D.	5 mg/kg
Dibromobiphenyl	N.D.	N.D.	N.D.	5 mg/kg
Tribromobiphenyl	N.D.	N.D.	N.D.	5 mg/kg
Tetrabromobiphenyl	N.D.	N.D.	N.D.	5 mg/kg
Pentabromobiphenyl	N.D.	N.D.	N.D.	5 mg/kg
Hexabromobiphenyl	N.D.	N.D.	N.D.	5 mg/kg
Heptabromobiphenyl	N.D.	N.D.	N.D.	5 mg/kg
Octabromobiphenyl	N.D.	N.D.	N.D.	5 mg/kg
Nonabromobiphenyl	N.D.	N.D.	N.D.	5 mg/kg
Decabromobiphenyl	N.D.	N.D.	N.D.	5 mg/kg

Test Report

Report No. A2250764973101R1

Page 11 of 30

Tested Item(s)	Result			MDL
	007	008	009	
Polybrominated Biphenyls (PBBs)				
Monobromobiphenyl	N.D.	N.D.	N.D.	5 mg/kg
Dibromobiphenyl	N.D.	N.D.	N.D.	5 mg/kg
Tribromobiphenyl	N.D.	N.D.	N.D.	5 mg/kg
Tetrabromobiphenyl	N.D.	N.D.	N.D.	5 mg/kg
Pentabromobiphenyl	N.D.	N.D.	N.D.	5 mg/kg
Hexabromobiphenyl	N.D.	N.D.	N.D.	5 mg/kg
Heptabromobiphenyl	N.D.	N.D.	N.D.	5 mg/kg
Octabromobiphenyl	N.D.	N.D.	N.D.	5 mg/kg
Nonabromobiphenyl	N.D.	N.D.	N.D.	5 mg/kg
Decabromobiphenyl	N.D.	N.D.	N.D.	5 mg/kg

Tested Item(s)	Result	MDL
	011	
Polybrominated Biphenyls (PBBs)		
Monobromobiphenyl	N.D.	5 mg/kg
Dibromobiphenyl	N.D.	5 mg/kg
Tribromobiphenyl	N.D.	5 mg/kg
Tetrabromobiphenyl	N.D.	5 mg/kg
Pentabromobiphenyl	N.D.	5 mg/kg
Hexabromobiphenyl	N.D.	5 mg/kg
Heptabromobiphenyl	N.D.	5 mg/kg
Octabromobiphenyl	N.D.	5 mg/kg
Nonabromobiphenyl	N.D.	5 mg/kg
Decabromobiphenyl	N.D.	5 mg/kg

Test Report

Report No. A2250764973101R1

Page 12 of 30

Tested Item(s)	Result			MDL
	001	002	003	
Polybrominated Diphenyl Ethers (PBDEs)				
Monobromodiphenyl ether	N.D.	N.D.	N.D.	5 mg/kg
Dibromodiphenyl ether	N.D.	N.D.	N.D.	5 mg/kg
Tribromodiphenyl ether	N.D.	N.D.	N.D.	5 mg/kg
Tetrabromodiphenyl ether	N.D.	N.D.	N.D.	5 mg/kg
Pentabromodiphenyl ether	N.D.	N.D.	N.D.	5 mg/kg
Hexabromodiphenyl ether	N.D.	N.D.	N.D.	5 mg/kg
Heptabromodiphenyl ether	N.D.	N.D.	N.D.	5 mg/kg
Octabromodiphenyl ether	N.D.	N.D.	N.D.	5 mg/kg
Nonabromodiphenyl ether	N.D.	N.D.	N.D.	5 mg/kg
Decabromodiphenyl ether	N.D.	N.D.	N.D.	5 mg/kg

Tested Item(s)	Result			MDL
	004	005	006	
Polybrominated Diphenyl Ethers (PBDEs)				
Monobromodiphenyl ether	N.D.	N.D.	N.D.	5 mg/kg
Dibromodiphenyl ether	N.D.	N.D.	N.D.	5 mg/kg
Tribromodiphenyl ether	N.D.	N.D.	N.D.	5 mg/kg
Tetrabromodiphenyl ether	N.D.	N.D.	N.D.	5 mg/kg
Pentabromodiphenyl ether	N.D.	N.D.	N.D.	5 mg/kg
Hexabromodiphenyl ether	N.D.	N.D.	N.D.	5 mg/kg
Heptabromodiphenyl ether	N.D.	N.D.	N.D.	5 mg/kg
Octabromodiphenyl ether	N.D.	N.D.	N.D.	5 mg/kg
Nonabromodiphenyl ether	N.D.	N.D.	N.D.	5 mg/kg
Decabromodiphenyl ether	N.D.	N.D.	N.D.	5 mg/kg

Test Report

Report No. A2250764973101R1

Page 13 of 30

Tested Item(s)	Result			MDL
	007	008	009	
Polybrominated Diphenyl Ethers (PBDEs)				
Monobromodiphenyl ether	N.D.	N.D.	N.D.	5 mg/kg
Dibromodiphenyl ether	N.D.	N.D.	N.D.	5 mg/kg
Tribromodiphenyl ether	N.D.	N.D.	N.D.	5 mg/kg
Tetrabromodiphenyl ether	N.D.	N.D.	N.D.	5 mg/kg
Pentabromodiphenyl ether	N.D.	N.D.	N.D.	5 mg/kg
Hexabromodiphenyl ether	N.D.	N.D.	N.D.	5 mg/kg
Heptabromodiphenyl ether	N.D.	N.D.	N.D.	5 mg/kg
Octabromodiphenyl ether	N.D.	N.D.	N.D.	5 mg/kg
Nonabromodiphenyl ether	N.D.	N.D.	N.D.	5 mg/kg
Decabromodiphenyl ether	N.D.	N.D.	N.D.	5 mg/kg

Tested Item(s)	Result	MDL
	011	
Polybrominated Diphenyl Ethers (PBDEs)		
Monobromodiphenyl ether	N.D.	5 mg/kg
Dibromodiphenyl ether	N.D.	5 mg/kg
Tribromodiphenyl ether	N.D.	5 mg/kg
Tetrabromodiphenyl ether	N.D.	5 mg/kg
Pentabromodiphenyl ether	N.D.	5 mg/kg
Hexabromodiphenyl ether	N.D.	5 mg/kg
Heptabromodiphenyl ether	N.D.	5 mg/kg
Octabromodiphenyl ether	N.D.	5 mg/kg
Nonabromodiphenyl ether	N.D.	5 mg/kg
Decabromodiphenyl ether	N.D.	5 mg/kg

Test Report

Report No. A2250764973101R1

Page 14 of 30

Tested Item(s)	Result			MDL
	001	002	003	
Phthalates (DBP, BBP, DEHP, DIBP)				
Dibutyl phthalate (DBP) CAS#:84-74-2	N.D.	N.D.	N.D.	50 mg/kg
Butyl benzyl phthalate (BBP) CAS#:85-68-7	N.D.	N.D.	N.D.	50 mg/kg
Di-(2-ethylhexyl) phthalate (DEHP) CAS#:117-81-7	N.D.	N.D.	N.D.	50 mg/kg
Diisobutyl phthalate (DIBP) CAS#:84-69-5	N.D.	N.D.	N.D.	50 mg/kg

Tested Item(s)	Result			MDL
	004	005	006	
Phthalates (DBP, BBP, DEHP, DIBP)				
Dibutyl phthalate (DBP) CAS#:84-74-2	N.D.	N.D.	N.D.	50 mg/kg
Butyl benzyl phthalate (BBP) CAS#:85-68-7	N.D.	N.D.	N.D.	50 mg/kg
Di-(2-ethylhexyl) phthalate (DEHP) CAS#:117-81-7	N.D.	N.D.	N.D.	50 mg/kg
Diisobutyl phthalate (DIBP) CAS#:84-69-5	N.D.	N.D.	N.D.	50 mg/kg

Tested Item(s)	Result			MDL
	007	008	009	
Phthalates (DBP, BBP, DEHP, DIBP)				
Dibutyl phthalate (DBP) CAS#:84-74-2	N.D.	N.D.	N.D.	50 mg/kg
Butyl benzyl phthalate (BBP) CAS#:85-68-7	N.D.	N.D.	N.D.	50 mg/kg
Di-(2-ethylhexyl) phthalate (DEHP) CAS#:117-81-7	N.D.	N.D.	N.D.	50 mg/kg
Diisobutyl phthalate (DIBP) CAS#:84-69-5	N.D.	N.D.	N.D.	50 mg/kg

Test Report

Report No. A2250764973101R1

Page 15 of 30

Tested Item(s)	Result			MDL
	011			
Phthalates (DBP, BBP, DEHP, DIBP)				
Dibutyl phthalate (DBP) CAS#:84-74-2	N.D.			50 mg/kg
Butyl benzyl phthalate (BBP) CAS#:85-68-7	N.D.			50 mg/kg
Di-(2-ethylhexyl) phthalate (DEHP) CAS#:117-81-7	N.D.			50 mg/kg
Diisobutyl phthalate (DIBP) CAS#:84-69-5	N.D.			50 mg/kg

Tested Item(s)	Result			MDL
	001	002	003	
Polycyclic Aromatic Hydrocarbons (PAHs)				
Naphthalene	1.5 mg/kg	1.5 mg/kg	1.2 mg/kg	0.2 mg/kg
Phenanthrene	N.D.	N.D.	N.D.	0.2 mg/kg
Anthracene	N.D.	N.D.	N.D.	0.2 mg/kg
Fluoranthene	N.D.	N.D.	N.D.	0.2 mg/kg
Pyrene	N.D.	N.D.	N.D.	0.2 mg/kg
Chrysene	N.D.	N.D.	N.D.	0.2 mg/kg
Benzo(a)anthracene	N.D.	N.D.	N.D.	0.2 mg/kg
Benzo(b)fluoranthene	N.D.	N.D.	N.D.	0.2 mg/kg
Benzo(k)fluoranthene	N.D.	N.D.	N.D.	0.2 mg/kg
Benzo(j)fluoranthene	N.D.	N.D.	N.D.	0.2 mg/kg
Benzo(a)pyrene	N.D.	N.D.	N.D.	0.2 mg/kg
Benzo(e)pyrene	N.D.	N.D.	N.D.	0.2 mg/kg
Dibenzo(a,h)anthracene	N.D.	N.D.	N.D.	0.2 mg/kg
Benzo(g,h,i)perylene	N.D.	N.D.	N.D.	0.2 mg/kg
Indeno(1,2,3-cd)pyrene	N.D.	N.D.	N.D.	0.2 mg/kg
Acenaphthene	N.D.	N.D.	N.D.	0.2 mg/kg
Fluorene	N.D.	N.D.	N.D.	0.2 mg/kg
Acenaphthylene	N.D.	N.D.	N.D.	0.2 mg/kg

Test Report

Report No. A2250764973101R1

Page 16 of 30

Tested Item(s)	Result			MDL
	004	005	A2250825578101002	
Polycyclic Aromatic Hydrocarbons (PAHs)				
Naphthalene	1.9 mg/kg	1.1 mg/kg	N.D.	0.2 mg/kg
Phenanthrene	N.D.	N.D.	N.D.	0.2 mg/kg
Anthracene	N.D.	N.D.	N.D.	0.2 mg/kg
Fluoranthene	N.D.	N.D.	N.D.	0.2 mg/kg
Pyrene	N.D.	N.D.	N.D.	0.2 mg/kg
Chrysene	N.D.	N.D.	N.D.	0.2 mg/kg
Benzo(a)anthracene	N.D.	N.D.	N.D.	0.2 mg/kg
Benzo(b)fluoranthene	N.D.	N.D.	N.D.	0.2 mg/kg
Benzo(k)fluoranthene	N.D.	N.D.	N.D.	0.2 mg/kg
Benzo(j)fluoranthene	N.D.	N.D.	N.D.	0.2 mg/kg
Benzo(a)pyrene	N.D.	N.D.	N.D.	0.2 mg/kg
Benzo(e)pyrene	N.D.	N.D.	N.D.	0.2 mg/kg
Dibenzo(a,h)anthracene	N.D.	N.D.	N.D.	0.2 mg/kg
Benzo(g,h,i)perylene	N.D.	N.D.	N.D.	0.2 mg/kg
Indeno(1,2,3-cd)pyrene	N.D.	N.D.	N.D.	0.2 mg/kg
Acenaphthene	N.D.	N.D.	N.D.	0.2 mg/kg
Fluorene	N.D.	N.D.	N.D.	0.2 mg/kg
Acenaphthylene	N.D.	N.D.	N.D.	0.2 mg/kg

Tested Item(s)	Result			MDL
	007	008	009	
Polycyclic Aromatic Hydrocarbons (PAHs)				
Naphthalene	1.7 mg/kg	1.1 mg/kg	0.8 mg/kg	0.2 mg/kg
Phenanthrene	N.D.	N.D.	0.3 mg/kg	0.2 mg/kg
Anthracene	N.D.	N.D.	N.D.	0.2 mg/kg
Fluoranthene	N.D.	N.D.	N.D.	0.2 mg/kg
Pyrene	N.D.	N.D.	0.3 mg/kg	0.2 mg/kg
Chrysene	N.D.	N.D.	N.D.	0.2 mg/kg
Benzo(a)anthracene	N.D.	N.D.	N.D.	0.2 mg/kg
Benzo(b)fluoranthene	N.D.	N.D.	N.D.	0.2 mg/kg
Benzo(k)fluoranthene	N.D.	N.D.	N.D.	0.2 mg/kg
Benzo(j)fluoranthene	N.D.	N.D.	N.D.	0.2 mg/kg
Benzo(a)pyrene	N.D.	N.D.	N.D.	0.2 mg/kg
Benzo(e)pyrene	N.D.	N.D.	N.D.	0.2 mg/kg
Dibenzo(a,h)anthracene	N.D.	N.D.	N.D.	0.2 mg/kg
Benzo(g,h,i)perylene	N.D.	N.D.	N.D.	0.2 mg/kg
Indeno(1,2,3-cd)pyrene	N.D.	N.D.	N.D.	0.2 mg/kg
Acenaphthene	N.D.	N.D.	N.D.	0.2 mg/kg
Fluorene	N.D.	N.D.	N.D.	0.2 mg/kg
Acenaphthylene	N.D.	N.D.	N.D.	0.2 mg/kg

Test Report

Report No. A2250764973101R1

Page 17 of 30

Tested Item(s)	Result			MDL
	011			
Polycyclic Aromatic Hydrocarbons (PAHs)				
Naphthalene	N.D.			0.2 mg/kg
Phenanthrene	N.D.			0.2 mg/kg
Anthracene	N.D.			0.2 mg/kg
Fluoranthene	N.D.			0.2 mg/kg
Pyrene	N.D.			0.2 mg/kg
Chrysene	N.D.			0.2 mg/kg
Benzo(a)anthracene	N.D.			0.2 mg/kg
Benzo(b)fluoranthene	N.D.			0.2 mg/kg
Benzo(k)fluoranthene	N.D.			0.2 mg/kg
Benzo(j)fluoranthene	N.D.			0.2 mg/kg
Benzo(a)pyrene	N.D.			0.2 mg/kg
Benzo(e)pyrene	N.D.			0.2 mg/kg
Dibenzo(a,h)anthracene	N.D.			0.2 mg/kg
Benzo(g,h,i)perylene	N.D.			0.2 mg/kg
Indeno(1,2,3-cd)pyrene	N.D.			0.2 mg/kg
Acenaphthene	N.D.			0.2 mg/kg
Fluorene	N.D.			0.2 mg/kg
Acenaphthylene	N.D.			0.2 mg/kg

Tested Item(s)	Result			MDL
	001	002	003	
Tetrabromobisphenol A (TBBP-A)	N.D.	N.D.	N.D.	5 mg/kg

Tested Item(s)	Result			MDL
	004	005	006	
Tetrabromobisphenol A (TBBP-A)	N.D.	N.D.	N.D.	5 mg/kg

Tested Item(s)	Result			MDL
	007	008	009	
Tetrabromobisphenol A (TBBP-A)	N.D.	N.D.	N.D.	5 mg/kg

Test Report

Report No. A2250764973101R1

Page 18 of 30

Tested Item(s)	Result			MDL
	011			
Tetrabromobisphenol A (TBBP-A)	N.D.			5 mg/kg

Tested Item(s)	Result			MDL
	001	002	003	
Perfluorooctane Sulfonates (PFOS)	N.D.	N.D.	N.D.	0.01 mg/kg

Tested Item(s)	Result			MDL
	004	005	006	
Perfluorooctane Sulfonates (PFOS)	N.D.	N.D.	N.D.	0.01 mg/kg

Tested Item(s)	Result			MDL
	007	008	009	
Perfluorooctane Sulfonates (PFOS)	N.D.	N.D.	N.D.	0.01 mg/kg

Tested Item(s)	Result			MDL
	011			
Perfluorooctane Sulfonates (PFOS)	N.D.			0.01 mg/kg

Test Report

Report No. A2250764973101R1

Page 19 of 30

Tested Item(s)	Result			MDL
	001	002	003	
Phthalates				
Dibutyl phthalate (DBP) CAS#:84-74-2	N.D.	N.D.	N.D.	50 mg/kg
Butyl benzyl phthalate (BBP) CAS#:85-68-7	N.D.	N.D.	N.D.	50 mg/kg
Di-(2-ethylhexyl) phthalate (DEHP) CAS#:117-81-7	N.D.	N.D.	N.D.	50 mg/kg
Di-n-octyl phthalate (DNOP) CAS#:117-84-0	N.D.	N.D.	N.D.	50 mg/kg
Di-isononyl phthalate (DINP) CAS#:28553-12-0, 68515-48-0	N.D.	N.D.	N.D.	50 mg/kg
Di-iso-decyl phthalate (DIDP) CAS#:26761-40-0, 68515-49-1	N.D.	N.D.	N.D.	50 mg/kg
Dimethyl phthalate (DMP) CAS#:131-11-3	N.D.	N.D.	N.D.	50 mg/kg
Diethyl phthalate (DEP) CAS#:84-66-2	N.D.	N.D.	N.D.	50 mg/kg
Dipropyl phthalate (DPrP) CAS#:131-16-8	N.D.	N.D.	N.D.	50 mg/kg
Diisobutyl phthalate (DIBP) CAS#:84-69-5	N.D.	N.D.	N.D.	50 mg/kg
Dipentyl phthalate (DPP/DPENP) CAS#:131-18-0	N.D.	N.D.	N.D.	50 mg/kg
Diheptyl phthalate (DHP) CAS#:3648-21-3	N.D.	N.D.	N.D.	50 mg/kg
Dicyclohexyl phthalate (DCHP) CAS#:84-61-7	N.D.	N.D.	N.D.	50 mg/kg
Diisooctyl phthalate (DIOP) CAS#:27554-26-3	N.D.	N.D.	N.D.	50 mg/kg
Dinonyl phthalate (DNP) CAS#:84-76-4	N.D.	N.D.	N.D.	50 mg/kg
Diisononyl adipate (DINA) CAS#:33703-08-1	N.D.	N.D.	N.D.	50 mg/kg

Test Report

Report No. A2250764973101R1

Page 20 of 30

Tested Item(s)	Result			MDL
	004	005	006	
Phthalates				
Dibutyl phthalate (DBP) CAS#:84-74-2	N.D.	N.D.	N.D.	50 mg/kg
Butyl benzyl phthalate (BBP) CAS#:85-68-7	N.D.	N.D.	N.D.	50 mg/kg
Di-(2-ethylhexyl) phthalate (DEHP) CAS#:117-81-7	N.D.	N.D.	N.D.	50 mg/kg
Di-n-octyl phthalate (DNOP) CAS#:117-84-0	N.D.	N.D.	N.D.	50 mg/kg
Di-isononyl phthalate (DINP) CAS#:28553-12-0, 68515-48-0	N.D.	N.D.	N.D.	50 mg/kg
Di-iso-decyl phthalate (DIDP) CAS#:26761-40-0, 68515-49-1	N.D.	N.D.	N.D.	50 mg/kg
Dimethyl phthalate (DMP) CAS#:131-11-3	N.D.	N.D.	N.D.	50 mg/kg
Diethyl phthalate (DEP) CAS#:84-66-2	N.D.	N.D.	N.D.	50 mg/kg
Dipropyl phthalate (DPrP) CAS#:131-16-8	N.D.	N.D.	N.D.	50 mg/kg
Diisobutyl phthalate (DIBP) CAS#:84-69-5	N.D.	N.D.	N.D.	50 mg/kg
Dipentyl phthalate (DPP/DPENP) CAS#:131-18-0	N.D.	N.D.	N.D.	50 mg/kg
Diheptyl phthalate (DHP) CAS#:3648-21-3	N.D.	N.D.	N.D.	50 mg/kg
Dicyclohexyl phthalate (DCHP) CAS#:84-61-7	N.D.	N.D.	N.D.	50 mg/kg
Diisooctyl phthalate (DIOP) CAS#:27554-26-3	N.D.	N.D.	N.D.	50 mg/kg
Dinonyl phthalate (DNP) CAS#:84-76-4	N.D.	N.D.	N.D.	50 mg/kg
Diisononyl adipate (DINA) CAS#:33703-08-1	N.D.	N.D.	N.D.	50 mg/kg

Test Report

Report No. A2250764973101R1

Page 21 of 30

Tested Item(s)	Result			MDL
	007	008	009	
Phthalates				
Dibutyl phthalate (DBP) CAS#:84-74-2	N.D.	N.D.	N.D.	50 mg/kg
Butyl benzyl phthalate (BBP) CAS#:85-68-7	N.D.	N.D.	N.D.	50 mg/kg
Di-(2-ethylhexyl) phthalate (DEHP) CAS#:117-81-7	N.D.	N.D.	N.D.	50 mg/kg
Di-n-octyl phthalate (DNOP) CAS#:117-84-0	N.D.	N.D.	N.D.	50 mg/kg
Di-isononyl phthalate (DINP) CAS#:28553-12-0, 68515-48-0	N.D.	N.D.	N.D.	50 mg/kg
Di-iso-decyl phthalate (DIDP) CAS#:26761-40-0, 68515-49-1	N.D.	N.D.	N.D.	50 mg/kg
Dimethyl phthalate (DMP) CAS#:131-11-3	N.D.	N.D.	N.D.	50 mg/kg
Diethyl phthalate (DEP) CAS#:84-66-2	N.D.	N.D.	N.D.	50 mg/kg
Dipropyl phthalate (DPrP) CAS#:131-16-8	N.D.	N.D.	N.D.	50 mg/kg
Diisobutyl phthalate (DIBP) CAS#:84-69-5	N.D.	N.D.	N.D.	50 mg/kg
Dipentyl phthalate (DPP/DPENP) CAS#:131-18-0	N.D.	N.D.	N.D.	50 mg/kg
Diheptyl phthalate (DHP) CAS#:3648-21-3	N.D.	N.D.	N.D.	50 mg/kg
Dicyclohexyl phthalate (DCHP) CAS#:84-61-7	N.D.	N.D.	N.D.	50 mg/kg
Diisooctyl phthalate (DIOP) CAS#:27554-26-3	N.D.	N.D.	N.D.	50 mg/kg
Dinonyl phthalate (DNP) CAS#:84-76-4	N.D.	N.D.	N.D.	50 mg/kg
Diisononyl adipate (DINA) CAS#:33703-08-1	N.D.	N.D.	N.D.	50 mg/kg

Test Report

Report No. A2250764973101R1

Page 22 of 30

Tested Item(s)	Result	MDL
	011	
Phthalates		
Dibutyl phthalate (DBP) CAS#:84-74-2	N.D.	50 mg/kg
Butyl benzyl phthalate (BBP) CAS#:85-68-7	N.D.	50 mg/kg
Di-(2-ethylhexyl) phthalate (DEHP) CAS#:117-81-7	N.D.	50 mg/kg
Di-n-octyl phthalate (DNOP) CAS#:117-84-0	N.D.	50 mg/kg
Di-isononyl phthalate (DINP) CAS#:28553-12-0, 68515-48-0	N.D.	50 mg/kg
Di-iso-decyl phthalate (DIDP) CAS#:26761-40-0, 68515-49-1	N.D.	50 mg/kg
Dimethyl phthalate (DMP) CAS#:131-11-3	N.D.	50 mg/kg
Diethyl phthalate (DEP) CAS#:84-66-2	N.D.	50 mg/kg
Dipropyl phthalate (DPrP) CAS#:131-16-8	N.D.	50 mg/kg
Diisobutyl phthalate (DIBP) CAS#:84-69-5	N.D.	50 mg/kg
Dipentyl phthalate (DPP/DPENP) CAS#:131-18-0	N.D.	50 mg/kg
Diheptyl phthalate (DHP) CAS#:3648-21-3	N.D.	50 mg/kg
Dicyclohexyl phthalate (DCHP) CAS#:84-61-7	N.D.	50 mg/kg
Diisooctyl phthalate (DIOP) CAS#:27554-26-3	N.D.	50 mg/kg
Dinonyl phthalate (DNP) CAS#:84-76-4	N.D.	50 mg/kg
Diisononyl adipate (DINA) CAS#:33703-08-1	N.D.	50 mg/kg

Test Report

Report No. A2250764973101R1

Page 23 of 30

Tested Item(s)	Result			MDL
	001	002	003	
Red phosphorus	N.D.	N.D.	N.D.	500 mg/kg

Tested Item(s)	Result			MDL
	004	005	006	
Red phosphorus	N.D.	N.D.	N.D.	500 mg/kg

Tested Item(s)	Result			MDL
	007	008	009	
Red phosphorus	N.D.	N.D.	N.D.	500 mg/kg

Tested Item(s)	Result	MDL
	011	
Red phosphorus	N.D.	500 mg/kg

Sample/Part Description

No.	CTI Sample ID	Description
1	001	Black plastic grains
2	002	White plastic grains
3	003	Brown plastic grains
4	004	Blue plastic grains
5	005	Yellow plastic grains
6	006	Green plastic grains
7	007	Red plastic grains
8	008	Orange plastic grains
9	009	White ink
10	010	Cupreous metal
11	011	White plastic
12	012	Metal with silvery plating
13	013	Brassy metal
14	A2250825578101002	Green plastic grains

Test Report

Report No. A2250764973101R1

Page 24 of 30

Remark: The sample(s) had been dissolved totally tested for Lead, Cadmium, Mercury.

-MDL = Method Detection Limit

-N.D. = Not Detected (<MDL or LOQ)

-mg/kg = ppm = parts per million

-LOQ = Limit of Quantification, The LOQ of Hexavalent chromium is 0.10 $\mu\text{g}/\text{cm}^2$

-▼The sample is negative for Cr(VI) – The Cr(VI) concentration is below 0.10 $\mu\text{g}/\text{cm}^2$. The coating is considered a non-Cr(VI) based coating. Information on storage conditions and production date of the tested sample is unavailable and thus Cr(VI) results represent status of the sample at the time of testing.

Note: This testing report deleted tested item(s) “Polycyclic Aromatic Hydrocarbons (PAHs) of CTI Sample ID 006”, added CTI Sample ID A2250825578101002 based on the original report of No. A2250764973101. This testing report displaces the original one which was invalid since the date of this testing report released.

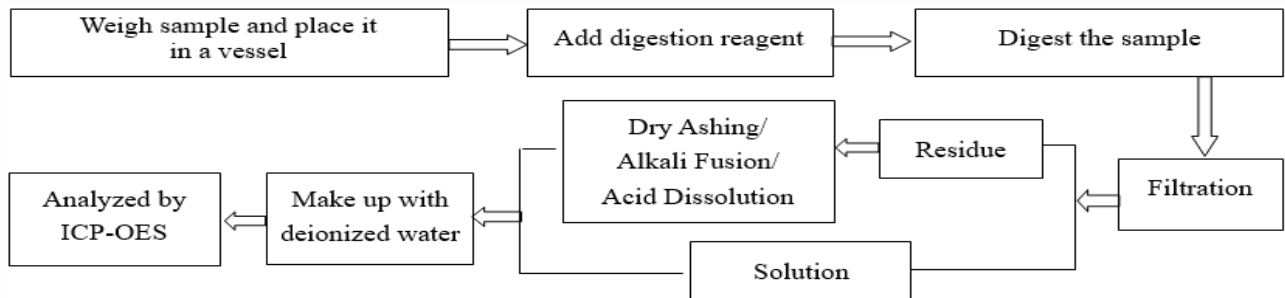
Test Report

Report No. A2250764973101R1

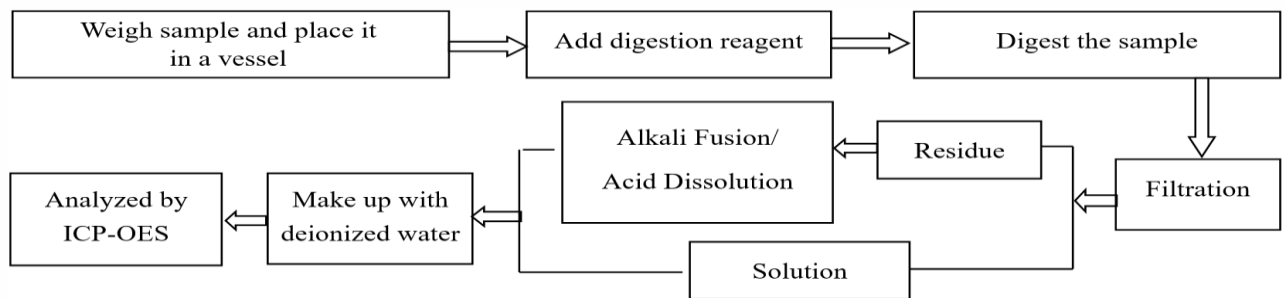
Page 25 of 30

2.3 Test Process

2.3.1. Lead (Pb), Cadmium (Cd), Chromium(Cr)

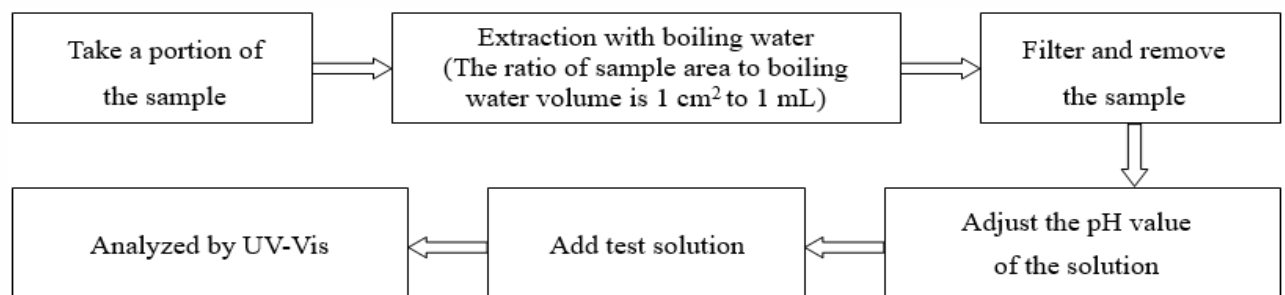


2.3.2. Mercury (Hg)

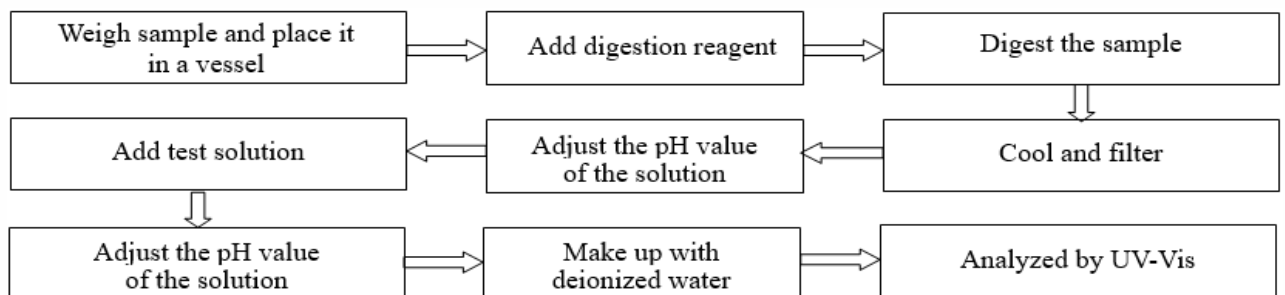


2.3.3. Hexavalent Chromium (Cr(VI))

(1) IEC 62321-7-1:2015



(2) IEC 62321-7-2:2017

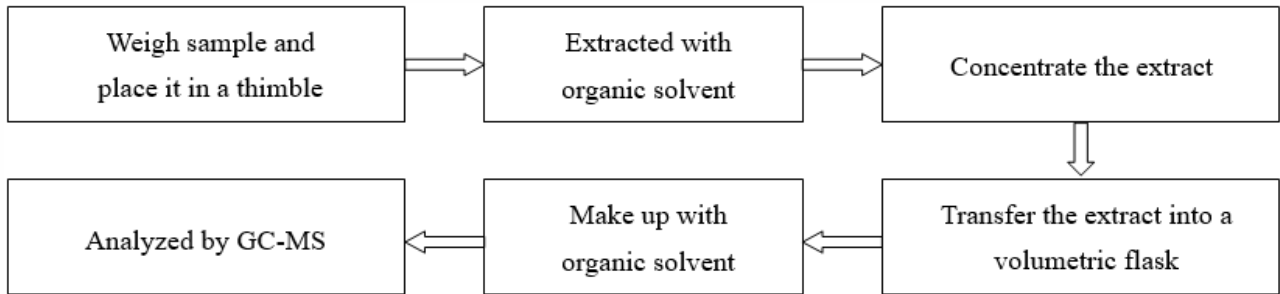


Test Report

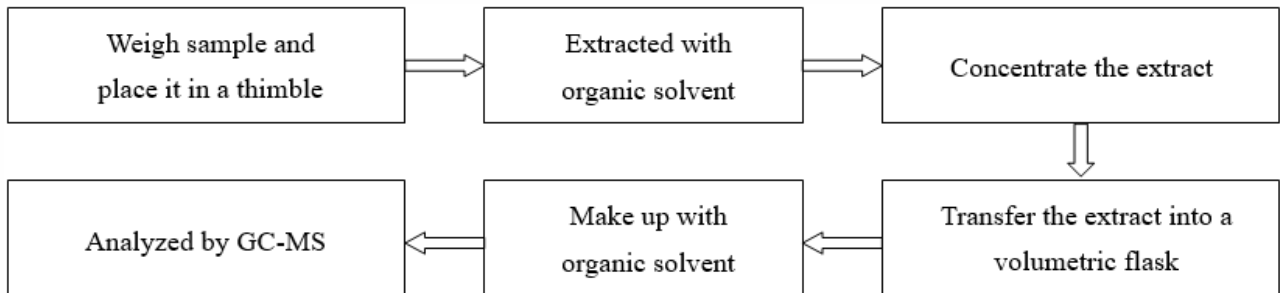
Report No. A2250764973101R1

Page 26 of 30

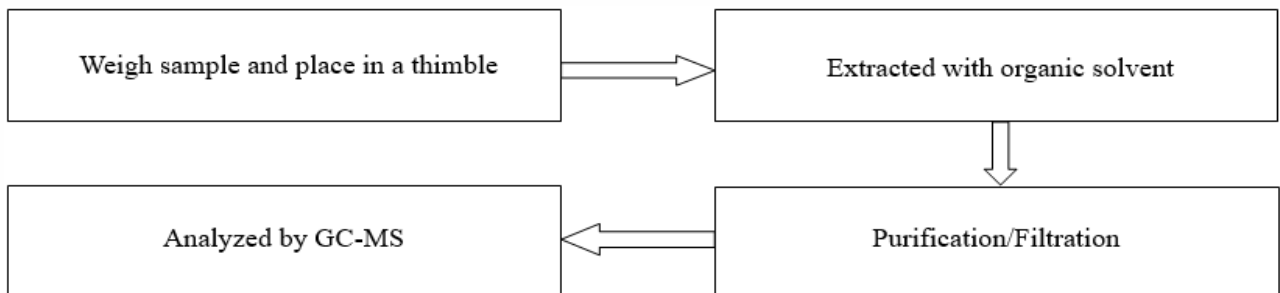
2.3.4. Polybrominated Biphenyls (PBBs), Polybrominated Diphenyl Ethers (PBDEs)



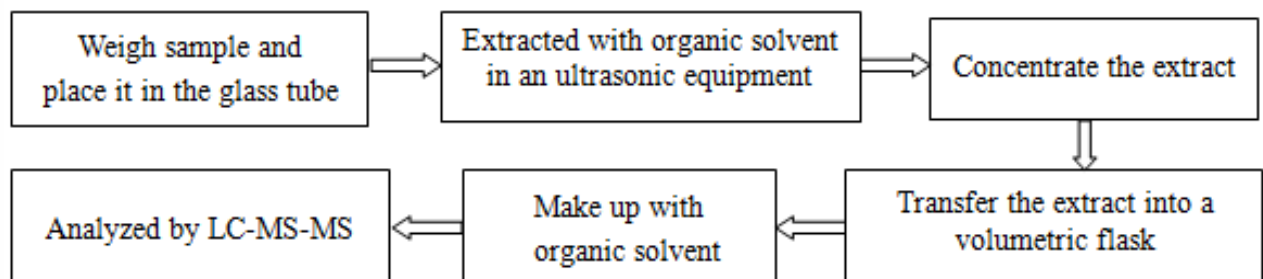
2.3.5. Phthalates (DBP, BBP, DEHP, DIBP)



2.3.6. Polycyclic Aromatic Hydrocarbons (PAHs)



2.3.7. Tetrabromobisphenol A (TBBP-A)

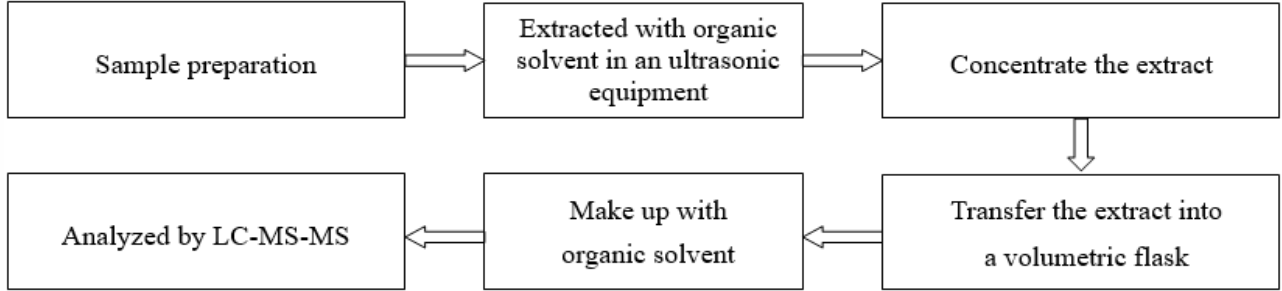


Test Report

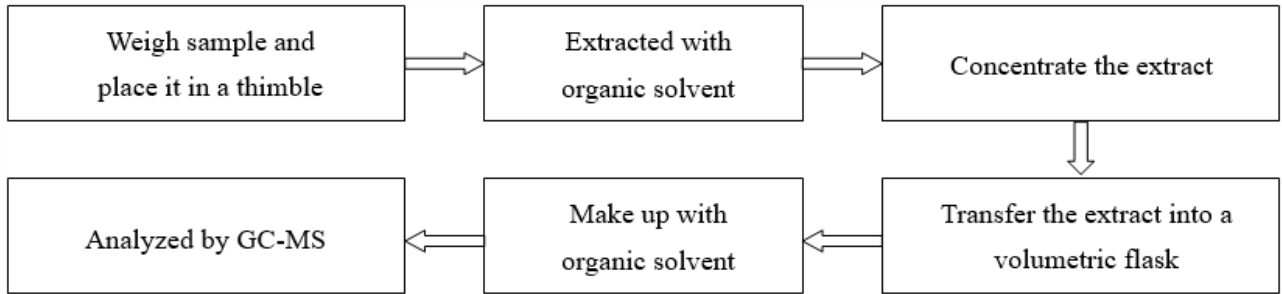
Report No. A2250764973101R1

Page 27 of 30

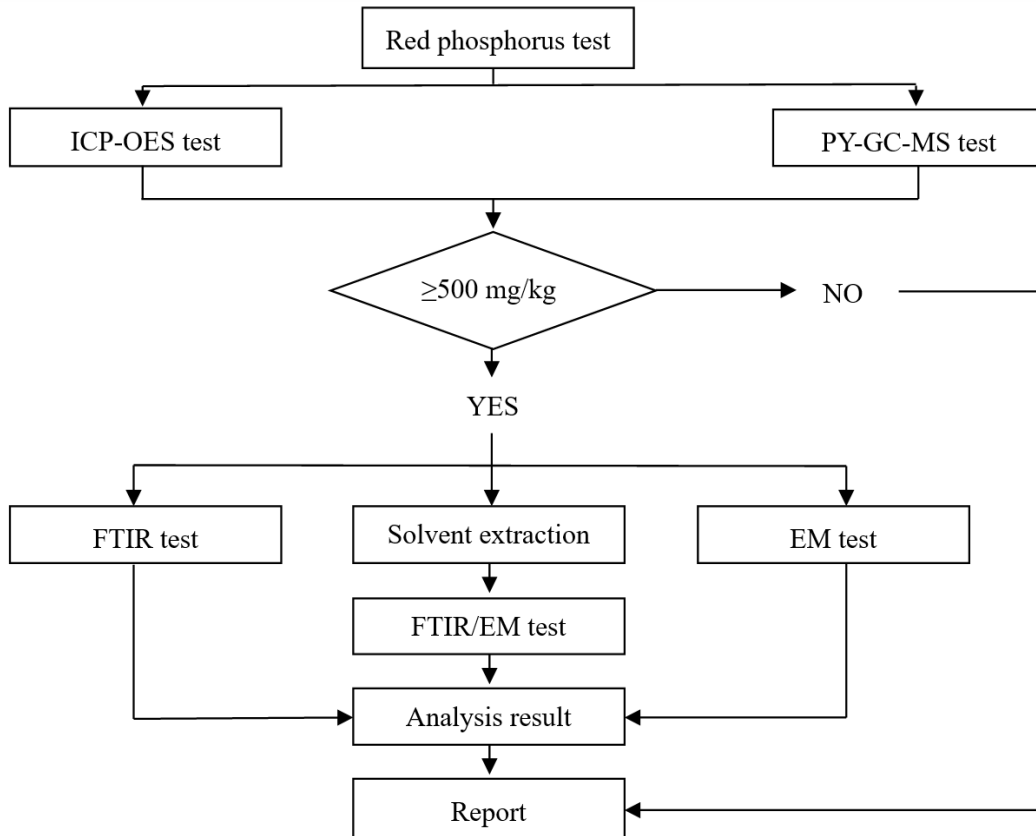
2.3.8. Perfluorooctane Sulfonates(PFOS)



2.3.9. Phthalates



2.3.10. Red phosphorus

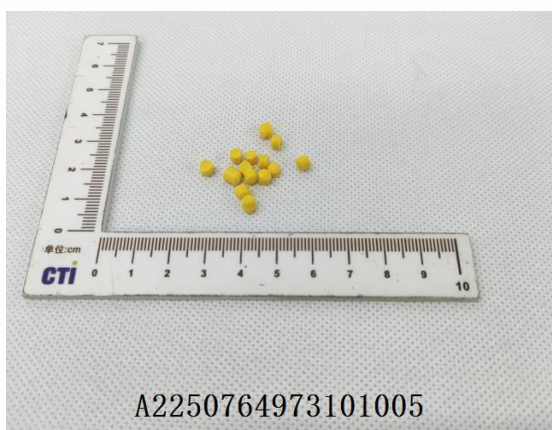
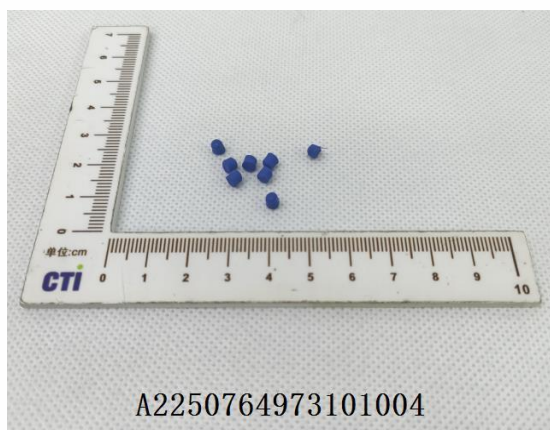
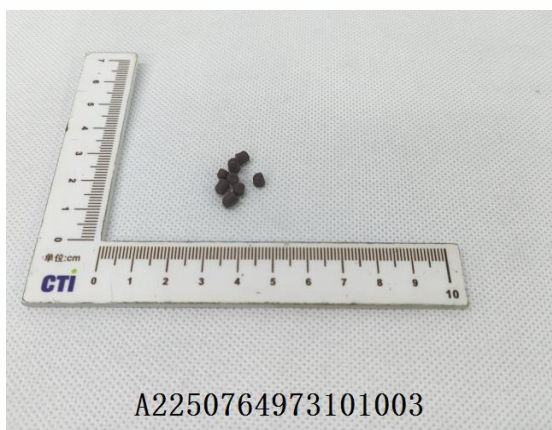
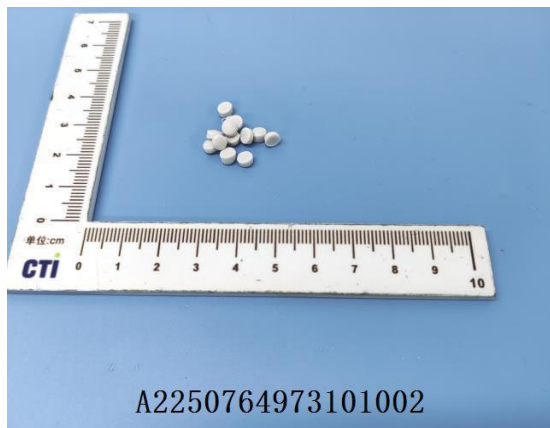
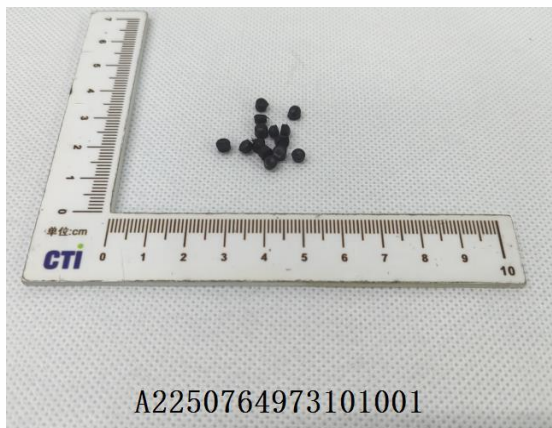


Test Report

Report No. A2250764973101R1

Page 28 of 30

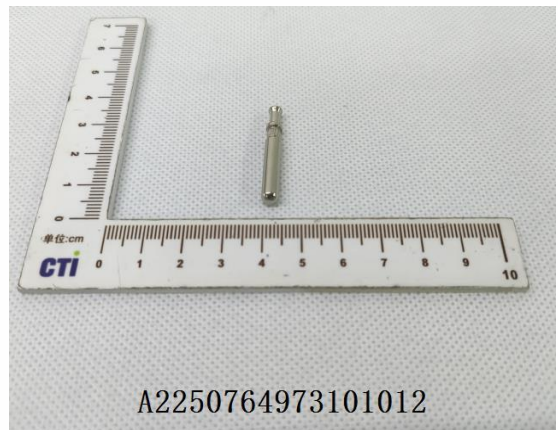
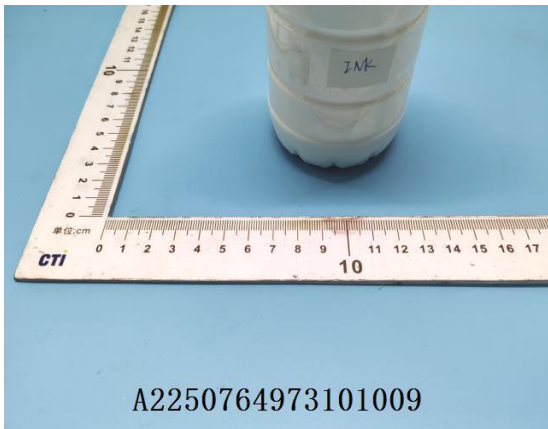
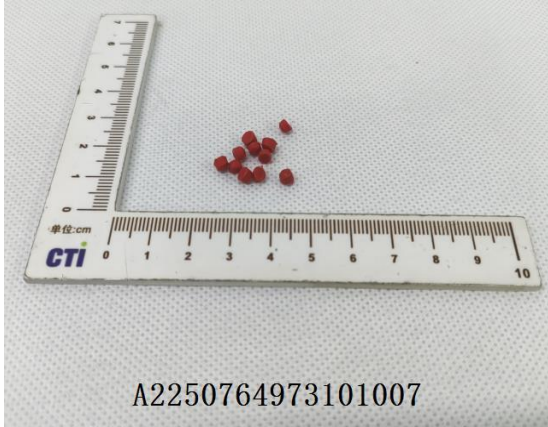
Photo(s) of the sample(s)



Test Report

Report No. A2250764973101R1

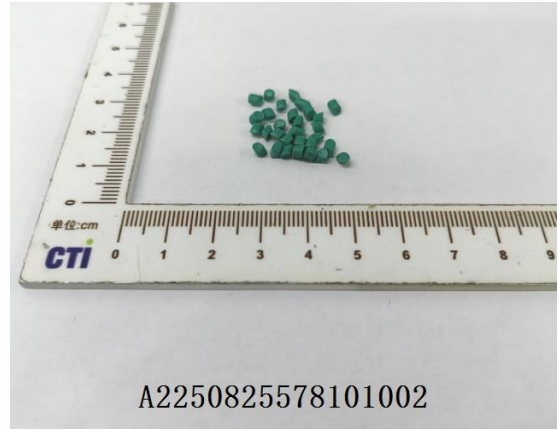
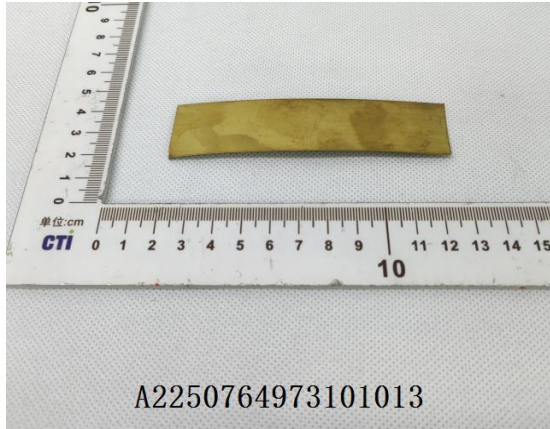
Page 29 of 30



Test Report

Report No. A2250764973101R1

Page 30 of 30



Statement:

1. This report is considered invalid without approved signature, special seal and the seal on the perforation;
2. The Company Name shown on Report and Address, the sample(s) and sample information was/were provided by the applicant who should be responsible for the authenticity which CTI hasn't verified;
3. The result(s) shown in this report refer(s) only to the sample(s) tested;
4. Unless otherwise stated, the decision rule for conformity reporting is based on Binary Statement for Simple Acceptance Rule ($w=0$) stated in ILAC-G8:09/2019 / CNAS-GL015:2022;
5. Without written approval of CTI, this report can't be reproduced except in full;
6. In case of any discrepancy between the English version and Chinese version of the testing reports (if generated), the Chinese version shall prevail.

*** End of Report ***

Appendix

Client Reference Information

AC/DC POWER CORD & PLUG ADAPTERS

YP-01	YP-12L-15	YP-17	YP-28	YP-34	YP-66	YP-316	YC-01	YC-13A
YP-02	YP-12L-16	YP-17L	YP-29	YP-34D	YP-67	YP-332	YC-03	YC-13B
YP-02L	YP-12L-17	YP-17H	YP-30	YP-35	YP-68L	YP-516	YC-04	YC-13BL
YP-03	YP-12L-18	YP-17HL	YP-31	YP-35L	YP-69L	YP-532	YC-05	YC-13C
YP-03A	YP-12N	YP-17C	YP-31A	YP-36	YP-71	YP-416	YC-05-1	YC-13D
YP-03B	YP-12P	YP-18	YP-31L	YP-37	YP-73L	YP-432	YC-05A	YC-13E
YP-03L	YP-12D	YP-18A	YP-31W	YP-37A	YP-75L	YS-32Q	YC-05B	YC-13G
YP-03H	YP-13	YP-18B	YP-32	YP-38	YP-76	YS-32W	YC-05C	YC-13H
YP-04	YP-13B	YP-18L	YP-32L	YP-39	YP-77	YS-33Q	YC-05L	YC-13K
YP-05	YP-13BL	YP-18N	YP-32A	YP-39A	YP-78	YS-33W	YC-05U	YC-13L
YP-06	YP-13C	YP-18T	YP-32B	YP-40	YP-79	YS-12W	YC-06	YC-13LG
YP-07	YP-13D	YP-18G	YP-32BL	YP-41	YP-80	YS-12Q	YC-06R	YC-13S
YP-08	YP-13H	YP-19	YP-32BL-1	YP-41A	YP-81	YS-18W	YC-07	YC-13W
YP-09	YP-13HB	YP-19L	YP-32BL-2	YP-42	YP-82	YS-18Q	YC-07A	YC-13F
YP-10	YP-13HP	YP-19H	YP-32BL-3	YP-43	YP-83	YS-12W-1	YC-07W	YC-13P
YP-11	YP-13L	YP-19HL	YP-32BL-4	YP-45	YP-84	YS-32W-1	YC-08	YC-13PL
YP-11A	YP-13M	YP-19C	YP-32D	YP-45A	YP-88L	YS-33W-1	YC-09	YC-14
YP-11B	YP-13N	YP-20	YP-32F	YP-46	YP-90L	YP-32L-1	YC-10	YC-14G
YP-11C	YP-13O	YP-21A	YP-32H	YP-46A	YP-91L	YP-32L-2	YC-11	YC-14L
YP-11K	YP-13P	YP-21C	YP-32G	YP-47	YP-92L	YP-32L-3	YC-11G	YC-14GL
YP-11L	YP-13Q	YP-21K	YP-32Y	YP-47A	YP-93L	YP-33L-1	YC-11GL	YC-14LA
YP-11L-9	YP-13S	YP-21S	YP-32C	YP-48	YP-93L-1	YP-32DL	YC-11GL+E	YC-14S
YP-11W	YP-13G	YP-21T	YP-32E	YP-49	YP-93L-2		YC-11GLR	YC-15
YP-11P	YP-13E	YP-21H	YP-32P	YP-50	YP-93L-3		YC-11GLR+E	YC-15A
YP-11T	YP-13T	YP-22	YP-32P-1	YP-51	YP-94L		YC-12	YC-15E
YP-11R	YP-13K	YP-22K	YP-32P-2	YP-52	YP-95L		YC-12A	YC-16
YP-11G	YP-13Y	YP-23	YP-33	YP-53	YP-96L		YC-12C	YC-17
YP-11F	YP-13F	YP-23K	YP-33A	YP-54	YP-97L		YC-12D	YC-17A
YP-12	YP-13R	YP-24	YP-33AL	YP-55	YP-98L		YC-12G	YC-18
YP-12A	YP-13W	YP-24K	YP-33AL-1	YP-56	YP-99L		YC-12K	YC-18L
YP-12C	YP-14	YP-24L	YP-33AL-2	YP-57	YP-103L		YC-12P	YC-18A
YP-12E	YP-15	YP-24L-1	YP-33AL-3	YP-58	YP-107		YC-12PL	YC-18K
YP-12G	YP-15G	YP-24F	YP-33AL-4	YP-58N	YP-108		YC-12-01	YC-18E
YP-12L	YP-15F	YP-25	YP-33B	YP-59	YP-109		YC-12GL	YC-18P
YP-12L-9	YP-15T	YP-26	YP-33C	YP-60L	YP-110		YC-12GL+E	YC-18PL
YP-12L-10	YP-16	YP-26A	YP-33E	YP-61A	YP-111		YC-12GLR	YC-19
YP-12L-11	YP-16L	YP-26B	YP-33L	YP-62	YP-112		YC-12GLR+E	YC-20
YP-12L-12	YP-16H	YP-26C	YP-33P	YP-63	YP-113		YC-12GL-3	YC-20D1
YP-12L-13	YP-16HL	YP-26H	YP-33P-1	YP-64	YP-352		YC-12HL	YC-20L
YP-12L-14	YP-16C	YP-27	YP-33P-2	YP-65			YC-13	YC-20LR

YP-12R	YP-12R-1	YP-17S	YP-18S				YC-13Z	YC-21
YC-21A	YD-07	YL-0213	YL-2112	YL-3213W	YL-3561	YL-6112L	YL-212B	HBL2811
YC-21D	YD-09	YL-0222	YL-2112L	YL-3214	YL-3613	YL-6113L	YL-3214L	HBL2821
YC-21L	YD-10	YL-0312	YL-2113	YL-3215	YL-3613A	YL-6114L		L630-P
YC-21F	YD-11	YL-0314	YL-2113A	YL-321515	YL-3613L	YL-6115L		CS8365
YC-22	YD-12	YL-0315	YL-2113L	YL-3215C	YL-3621	YL-6115C		L1530-P
YC-23	YD-13	YL-03A18	YL-2121	YL-3215A	YL-3621L	YL-6118		HBL2621
YC-24	YD-14	YL-0323	YL-2121L	YL-3215L	YL-3622	YL-6121L		CS8365C
YC-25	YD-15	YL-0412	YL-2121A	YL-3215L-1	YL-3622L	YL-6122L		HBL2721
YC-25L	YD-16	YL-0414	YL-2135	YL-3217	YL-3918	YL-6123		ME460P9W
YC-25E	YD-17	YL-0415	YL-2161	YL-3218	YL-4500	YL-6135		C532P6S
YC-34D	YD-17A	YL-0423	YL-21K12	YL-3220	YL-4512	YL-6145		L2130-P
YC-35	YD-17B	YL-0512	YL-21K13	YL-3223	YL-4514	YL-6146		WALTHER-230
YC-41A	YD-17L	YL-1113	YL-21K14	YL-3224	YL-4515	YL-8013		WALTHER-269
YC-45	YD-18	YL-1113A	YL-21K15	YL-3225	YL-4523	YL-8013L		WALTHER-261
YC-46	YD-19	YL-1113L	YL-21K21	YL-3212L-2	YL-4535	YL-8015		QX4
YC-52	YD-21	YL-1113B	YL-21K21L	YL-3212L-3	YL-4546	YL-8021		PS460P9W
YC-52A	YD-22	YL-1113C	YL-21K22	YL-3312	YL-4600	YL-8022		QX3
YC-53	YD-23	YL-1113BL	YL-21K23	YL-3312L	YL-4612	YL-8023		C563P6W
YC-54	YD-24	YL-1122	YL-21K35	YL-3312L-1	YL-4614	YL-8035		CS8365L
YC-55	YD-25	YL-1122L	YL-2212	YL-3312L-2	YL-4615	YL-8046		WALTHER-261306
YC-55A	YD-26	YL-1161	YL-2212L	YL-3312L-3	YL-4615F	YL-8100		
YC-56	YD-27	YL-1200	YL-2212LA	YL-331212	YL-4623F	YL-8113		
YC-58	YD-28	YL-1212	YL-2214	YL-3313	YL-4623	YL-8115		
YC-59	YD-29	YL-121212	YL-2215	YL-3314	YL-4645	YL-8121		
YC-61	YD-30	YL-1212L	YL-2215L	YL-3315	YL-4821	YL-8122		
YC-61A	YD-31	YL-1212L-1	YL-2215A	YL-3317	YL-4823	YL-8123		
YC-62	YD-32	YL-1212L-3	YL-2215C	YL-331717	YL-5216	YL-9149		
YC-64	YD-33	YL-1214	YL-2203	YL-3317L	YL-5253	YL-915		
YC-73L	YD-36	YL-1214L	YL-2245	YL-3317L-1	YL-5316	YL-915A		
YC-75L	YD-37	YL-1214G	YL-2246	YL-3318	YL-5352	YL-915B		
YC-77	YD-38	YL-1214W	YL-2300	YL-3318L	YL-5517	YL-915C		
YC-77A	YD-39	YL-1217	YL-2300A	YL-331818	YL-5556	YL-916		
YC-79	YD-42	YL-121717	YL-2300B	YL-3318L-1	YL-5617	YL-921		
YC-79A	SR 系列	YL-1217L	YL-2300C	YL-3318L-2	YL-5655	YL-921A		
YC-91L	YCM-001	YL-1217L-1	YL-2300L	YL-3318L-3	YL-6012	YL-921B		
YC-92L	YCM-002	YL-1218	YL-2318	YL-3320	YL-6012L	YL-223		
YC-93L	YCM-003	YL-1223	YL-2361	YL-3325	YL-6013	YL-935		
YC-12L	YCM-004	YL-1235	YL-2600	YL-3323	YL-6013L	YL-939		
YC-12S	YCM-005	YL-1245	YL-2615	YL-3324	YL-6014	YL-323		
YC-12Y		YL-1246	YL-2622	YL-3412	YL-6014L	YL-661		
YC-12T		YL-1249	YL-2623	YL-3413	YL-6015	YL-515		
YC-12SL		YL-1255	YL-2661	YL-3413A	YL-6015L	YL-312		
YC-12E		YL-1256	YL-27B17	YL-3415	YL-6021	YL-315		

YC-12LR	YL-1258	YL-3112	YL-3512	YL-6021L	YL-344
YC-15B	YL-1261	YL-3113L	YL-3512L	YL-6022	YL-212
YC-23A-1	YL-1623	YL-3114	YL-3514	YL-6022L	YL-150
YC-24A-1	YL-1653	YL-3212	YL-3514L	YL-6023	YL-150A
YC-23A	YL-1756	YL-3212L	YL-3515	YL-6035	YL-521
YC-24A	YL-1800	YL-321212	YL-3522	YL-6100	YL-521W
YC-12G+E	YL-1861	YL-3213	YL-3523	YL-6114	YL-3200
	YL-1923	YL-3213A	YL-3546	YL-6115	YL-3400

Client Reference Photo (Non-tested sample)



Statement:

1. The Appendix Information was/were provided by the applicant who should be responsible for the authenticity which CTI hasn't verified.
2. The Appendix Information is/are the supplement(s) for the Report A2250764973101R1.

