



Reference Report

Report No. A2240637385102R1

Page 1 of 21

Company Name YUNG LI CO.,LTD**shown on Report****Address** NO. 32, DAPU INDUSTRIAL ST.,CHANGPING TOWN, DONGGUAN
CITY,GUANGDONG PROVINCE,CHINA 523571

The following sample(s) and sample information was/were submitted and identified by/on the behalf of the applicant

CTI Sample ID	Sample Name	Material
001	cable	PVC BLACK
002		PVC WHITE
003		PVC BROWN
004		PVC BLUE
005		PVC YELLOW
006		PVC GREEN
007		PVC RED
008		PVC ORANGE
009		INK
010		CABLE COPPER

Sample Received Date

Oct. 16, 2024

Testing Period

Oct. 16, 2024 to Oct. 22, 2024

Test Requested

As specified by client, to test Lead (Pb), Cadmium (Cd), Mercury (Hg), Hexavalent Chromium (Cr(VI)), Polybrominated Biphenyls (PBBs), Polybrominated Diphenyl Ethers (PBDEs), Phthalates, Polycyclic Aromatic Hydrocarbons (PAHs), Tetrabromobisphenol A (TBBP-A), Perfluorooctane Sulfonates(PFOS), Red phosphorus in the submitted sample(s).

Test Method/Test Result(s)

Please refer to the following page(s).



Approved by

Yin Chi

Date

Dec. 16, 2024

Yin Chi

Lab Authorized Signatory

No. B311144909

Centre Testing International (Ningbo) Co.,Ltd.

1-2F, Eastern Factory, No.76, Jinghua Road, High-Tech Zone, Ningbo, Zhejiang, China

Reference Report

Report No. A2240637385102R1 Page 2 of 21

The following sample(s) and sample information was/were submitted and identified by/on the behalf of the applicant

CTI Sample ID	Reference Report No. - CTI Sample ID
001	A2240637385101-001
002	A2240637385101-002
003	A2240637385101-003
004	A2240637385101-004
005	A2240637385101-005
006	A2240637385101-006
007	A2240637385101-007
008	A2240637385101-008
009	A2240637385101-009
010	A2240637385101-010

Remark:
The samples with the reference information in the table above are non-tested in this report. According to the client’s statement, the material of the samples in the column "Reference Report No. - CTI Sample ID " in the table above are the same as the " CTI Sample ID " , so the test results and the photos of the “CTI Sample ID” are presented in reference to that one.

Reference Report

Report No. A2240637385102R1

Page 3 of 21

Test Method

Tested Item(s)	Test Method	Measured Equipment(s)
Lead (Pb)	IEC 62321-5:2013	ICP-OES
Cadmium (Cd)	IEC 62321-5:2013	ICP-OES
Mercury (Hg)	IEC 62321-4:2013+AMD1:2017 CSV	ICP-OES
Hexavalent Chromium (Cr(VI))	IEC 62321-7-1:2015	UV-Vis
	IEC 62321-7-2:2017 and/or determination of Total Chromium by IEC 62321-5:2013	UV-Vis/ICP-OES
Polybrominated Biphenyls (PBBs)	IEC 62321-6:2015	GC-MS
Polybrominated Diphenyl Ethers (PBDEs)	IEC 62321-6:2015	GC-MS
Phthalates (DBP, BBP, DEHP, DIBP)	IEC 62321-8:2017	GC-MS
Polycyclic Aromatic Hydrocarbons (PAHs)	Refer to AfPS GS 2019:01 PAK	GC-MS
Tetrabromobisphenol A (TBBP-A)	Refer to US EPA 3550C:2007 & US EPA 8321B:2007	LC-MS-MS
Phthalates(BBP,DEHP,DPrP,DBP, DHP,DCHP,DMP,DNP,DPP/DPENP, DEP,DIBP,DIDP,DINP,DIOP,DNOP,DINA)	Refer to EN 14372:2004(E)	GC-MS
Perfluorooctane Sulfonates(PFOS)	Refer to US EPA 3550C:2007 & US EPA 8321B:2007	LC-MS-MS
Red phosphorus	Refer to GB/T 6040-2002, GB/T 9722-2006, GB/T 17359-2012, EPA 6010D:2014	ICP-OES, PY-GC-MS, FTIR, EM

Reference Report

Report No. A2240637385102R1

Page 4 of 21

Test Result(s)

Tested Item(s)	Result			MDL
	001	002	003	
Lead (Pb)	N.D.	N.D.	7 mg/kg	2 mg/kg
Cadmium (Cd)	N.D.	N.D.	N.D.	2 mg/kg
Mercury (Hg)	N.D.	N.D.	N.D.	2 mg/kg
Hexavalent Chromium (Cr(VI))	N.D.	N.D.	N.D.	8 mg/kg
	--	--	--	0.10 µg/cm ² (LOQ)

Tested Item(s)	Result			MDL
	004	005	006	
Lead (Pb)	7 mg/kg	N.D.	N.D.	2 mg/kg
Cadmium (Cd)	N.D.	N.D.	N.D.	2 mg/kg
Mercury (Hg)	N.D.	N.D.	N.D.	2 mg/kg
Hexavalent Chromium (Cr(VI))	N.D.	N.D.	N.D.	8 mg/kg
	--	--	--	0.10 µg/cm ² (LOQ)

Tested Item(s)	Result			MDL
	007	008	009	
Lead (Pb)	N.D.	N.D.	N.D.	2 mg/kg
Cadmium (Cd)	N.D.	N.D.	N.D.	2 mg/kg
Mercury (Hg)	N.D.	N.D.	N.D.	2 mg/kg
Hexavalent Chromium (Cr(VI))	N.D.	N.D.	N.D.	8 mg/kg
	--	--	--	0.10 µg/cm ² (LOQ)

Tested Item(s)	Result	MDL
	010	
Lead (Pb)	N.D.	2 mg/kg
Cadmium (Cd)	N.D.	2 mg/kg
Mercury (Hg)	N.D.	2 mg/kg
Hexavalent Chromium (Cr(VI))	--	8 mg/kg
	N.D.▼	0.10 µg/cm ² (LOQ)

Reference Report

Report No. A2240637385102R1

Page 5 of 21

Tested Item(s)	Result			MDL
	001	002	003	
Polybrominated Biphenyls (PBBs)				
Monobromobiphenyl	N.D.	N.D.	N.D.	5 mg/kg
Dibromobiphenyl	N.D.	N.D.	N.D.	5 mg/kg
Tribromobiphenyl	N.D.	N.D.	N.D.	5 mg/kg
Tetrabromobiphenyl	N.D.	N.D.	N.D.	5 mg/kg
Pentabromobiphenyl	N.D.	N.D.	N.D.	5 mg/kg
Hexabromobiphenyl	N.D.	N.D.	N.D.	5 mg/kg
Heptabromobiphenyl	N.D.	N.D.	N.D.	5 mg/kg
Octabromobiphenyl	N.D.	N.D.	N.D.	5 mg/kg
Nonabromobiphenyl	N.D.	N.D.	N.D.	5 mg/kg
Decabromobiphenyl	N.D.	N.D.	N.D.	5 mg/kg

Tested Item(s)	Result			MDL
	004	005	006	
Polybrominated Biphenyls (PBBs)				
Monobromobiphenyl	N.D.	N.D.	N.D.	5 mg/kg
Dibromobiphenyl	N.D.	N.D.	N.D.	5 mg/kg
Tribromobiphenyl	N.D.	N.D.	N.D.	5 mg/kg
Tetrabromobiphenyl	N.D.	N.D.	N.D.	5 mg/kg
Pentabromobiphenyl	N.D.	N.D.	N.D.	5 mg/kg
Hexabromobiphenyl	N.D.	N.D.	N.D.	5 mg/kg
Heptabromobiphenyl	N.D.	N.D.	N.D.	5 mg/kg
Octabromobiphenyl	N.D.	N.D.	N.D.	5 mg/kg
Nonabromobiphenyl	N.D.	N.D.	N.D.	5 mg/kg
Decabromobiphenyl	N.D.	N.D.	N.D.	5 mg/kg

Reference Report

Report No. A2240637385102R1

Page 6 of 21

Tested Item(s)	Result			MDL
	007	008	009	
Polybrominated Biphenyls (PBBs)				
Monobromobiphenyl	N.D.	N.D.	N.D.	5 mg/kg
Dibromobiphenyl	N.D.	N.D.	N.D.	5 mg/kg
Tribromobiphenyl	N.D.	N.D.	N.D.	5 mg/kg
Tetrabromobiphenyl	N.D.	N.D.	N.D.	5 mg/kg
Pentabromobiphenyl	N.D.	N.D.	N.D.	5 mg/kg
Hexabromobiphenyl	N.D.	N.D.	N.D.	5 mg/kg
Heptabromobiphenyl	N.D.	N.D.	N.D.	5 mg/kg
Octabromobiphenyl	N.D.	N.D.	N.D.	5 mg/kg
Nonabromobiphenyl	N.D.	N.D.	N.D.	5 mg/kg
Decabromobiphenyl	N.D.	N.D.	N.D.	5 mg/kg

Tested Item(s)	Result			MDL
	001	002	003	
Polybrominated Diphenyl Ethers (PBDEs)				
Monobromodiphenyl ether	N.D.	N.D.	N.D.	5 mg/kg
Dibromodiphenyl ether	N.D.	N.D.	N.D.	5 mg/kg
Tribromodiphenyl ether	N.D.	N.D.	N.D.	5 mg/kg
Tetrabromodiphenyl ether	N.D.	N.D.	N.D.	5 mg/kg
Pentabromodiphenyl ether	N.D.	N.D.	N.D.	5 mg/kg
Hexabromodiphenyl ether	N.D.	N.D.	N.D.	5 mg/kg
Heptabromodiphenyl ether	N.D.	N.D.	N.D.	5 mg/kg
Octabromodiphenyl ether	N.D.	N.D.	N.D.	5 mg/kg
Nonabromodiphenyl ether	N.D.	N.D.	N.D.	5 mg/kg
Decabromodiphenyl ether	N.D.	N.D.	N.D.	5 mg/kg

Reference Report

Report No. A2240637385102R1

Page 7 of 21

Tested Item(s)	Result			MDL
	004	005	006	
Polybrominated Diphenyl Ethers (PBDEs)				
Monobromodiphenyl ether	N.D.	N.D.	N.D.	5 mg/kg
Dibromodiphenyl ether	N.D.	N.D.	N.D.	5 mg/kg
Tribromodiphenyl ether	N.D.	N.D.	N.D.	5 mg/kg
Tetrabromodiphenyl ether	N.D.	N.D.	N.D.	5 mg/kg
Pentabromodiphenyl ether	N.D.	N.D.	N.D.	5 mg/kg
Hexabromodiphenyl ether	N.D.	N.D.	N.D.	5 mg/kg
Heptabromodiphenyl ether	N.D.	N.D.	N.D.	5 mg/kg
Octabromodiphenyl ether	N.D.	N.D.	N.D.	5 mg/kg
Nonabromodiphenyl ether	N.D.	N.D.	N.D.	5 mg/kg
Decabromodiphenyl ether	N.D.	N.D.	N.D.	5 mg/kg

Tested Item(s)	Result			MDL
	007	008	009	
Polybrominated Diphenyl Ethers (PBDEs)				
Monobromodiphenyl ether	N.D.	N.D.	N.D.	5 mg/kg
Dibromodiphenyl ether	N.D.	N.D.	N.D.	5 mg/kg
Tribromodiphenyl ether	N.D.	N.D.	N.D.	5 mg/kg
Tetrabromodiphenyl ether	N.D.	N.D.	N.D.	5 mg/kg
Pentabromodiphenyl ether	N.D.	N.D.	N.D.	5 mg/kg
Hexabromodiphenyl ether	N.D.	N.D.	N.D.	5 mg/kg
Heptabromodiphenyl ether	N.D.	N.D.	N.D.	5 mg/kg
Octabromodiphenyl ether	N.D.	N.D.	N.D.	5 mg/kg
Nonabromodiphenyl ether	N.D.	N.D.	N.D.	5 mg/kg
Decabromodiphenyl ether	N.D.	N.D.	N.D.	5 mg/kg

Reference Report

Report No. A2240637385102R1

Page 8 of 21

Tested Item(s)	Result			MDL
	001	002	003	
Phthalates (DBP, BBP, DEHP, DIBP)				
Diisobutyl phthalate (DIBP) CAS#:84-69-5	N.D.	N.D.	N.D.	50 mg/kg
Dibutyl phthalate (DBP) CAS#:84-74-2	N.D.	N.D.	N.D.	50 mg/kg
Butyl benzyl phthalate (BBP) CAS#:85-68-7	N.D.	N.D.	N.D.	50 mg/kg
Di-(2-ethylhexyl) phthalate (DEHP) CAS#:117-81-7	N.D.	N.D.	N.D.	50 mg/kg

Tested Item(s)	Result			MDL
	004	005	006	
Phthalates (DBP, BBP, DEHP, DIBP)				
Diisobutyl phthalate (DIBP) CAS#:84-69-5	N.D.	N.D.	N.D.	50 mg/kg
Dibutyl phthalate (DBP) CAS#:84-74-2	N.D.	N.D.	N.D.	50 mg/kg
Butyl benzyl phthalate (BBP) CAS#:85-68-7	N.D.	N.D.	N.D.	50 mg/kg
Di-(2-ethylhexyl) phthalate (DEHP) CAS#:117-81-7	N.D.	N.D.	N.D.	50 mg/kg

Tested Item(s)	Result			MDL
	007	008	009	
Phthalates (DBP, BBP, DEHP, DIBP)				
Diisobutyl phthalate (DIBP) CAS#:84-69-5	N.D.	N.D.	N.D.	50 mg/kg
Dibutyl phthalate (DBP) CAS#:84-74-2	N.D.	N.D.	N.D.	50 mg/kg
Butyl benzyl phthalate (BBP) CAS#:85-68-7	N.D.	N.D.	N.D.	50 mg/kg
Di-(2-ethylhexyl) phthalate (DEHP) CAS#:117-81-7	N.D.	N.D.	N.D.	50 mg/kg

Reference Report

Report No. A2240637385102R1

Page 9 of 21

Tested Item(s)	Result				MDL
	001	002	003	004	
Polycyclic Aromatic Hydrocarbons (PAHs)					
Naphthalene	0.6 mg/kg	0.5 mg/kg	0.6 mg/kg	0.5 mg/kg	0.2 mg/kg
Acenaphthylene	N.D.	N.D.	N.D.	N.D.	0.2 mg/kg
Acenaphthene	N.D.	N.D.	N.D.	N.D.	0.2 mg/kg
Fluorene	N.D.	N.D.	N.D.	N.D.	0.2 mg/kg
Phenanthrene	N.D.	N.D.	N.D.	N.D.	0.2 mg/kg
Anthracene	N.D.	N.D.	N.D.	N.D.	0.2 mg/kg
Fluoranthene	N.D.	N.D.	N.D.	N.D.	0.2 mg/kg
Pyrene	N.D.	N.D.	N.D.	N.D.	0.2 mg/kg
Benzo(a)anthracene	N.D.	N.D.	N.D.	N.D.	0.2 mg/kg
Chrysene	N.D.	N.D.	N.D.	N.D.	0.2 mg/kg
Benzo(b)fluoranthene	N.D.	N.D.	N.D.	N.D.	0.2 mg/kg
Benzo(j)fluoranthene	N.D.	N.D.	N.D.	N.D.	0.2 mg/kg
Benzo(e)pyrene	N.D.	N.D.	N.D.	N.D.	0.2 mg/kg
Benzo(k)fluoranthene	N.D.	N.D.	N.D.	N.D.	0.2 mg/kg
Benzo(a)pyrene	N.D.	N.D.	N.D.	N.D.	0.2 mg/kg
Indeno(1,2,3-cd)pyrene	N.D.	N.D.	N.D.	N.D.	0.2 mg/kg
Dibenzo(a,h)anthracene	N.D.	N.D.	N.D.	N.D.	0.2 mg/kg
Benzo(g,h,i)perylene	N.D.	N.D.	N.D.	N.D.	0.2 mg/kg

Tested Item(s)	Result				MDL
	005	006	007	008	
Polycyclic Aromatic Hydrocarbons (PAHs)					
Naphthalene	0.3 mg/kg	0.8 mg/kg	0.5 mg/kg	0.6 mg/kg	0.2 mg/kg
Acenaphthylene	N.D.	N.D.	N.D.	N.D.	0.2 mg/kg
Acenaphthene	N.D.	N.D.	N.D.	N.D.	0.2 mg/kg
Fluorene	N.D.	N.D.	N.D.	N.D.	0.2 mg/kg
Phenanthrene	N.D.	N.D.	N.D.	N.D.	0.2 mg/kg
Anthracene	N.D.	N.D.	N.D.	N.D.	0.2 mg/kg
Fluoranthene	N.D.	N.D.	N.D.	N.D.	0.2 mg/kg
Pyrene	N.D.	N.D.	N.D.	N.D.	0.2 mg/kg
Benzo(a)anthracene	N.D.	N.D.	N.D.	N.D.	0.2 mg/kg
Chrysene	N.D.	N.D.	N.D.	N.D.	0.2 mg/kg
Benzo(b)fluoranthene	N.D.	N.D.	N.D.	N.D.	0.2 mg/kg
Benzo(j)fluoranthene	N.D.	N.D.	N.D.	N.D.	0.2 mg/kg
Benzo(e)pyrene	N.D.	N.D.	N.D.	N.D.	0.2 mg/kg
Benzo(k)fluoranthene	N.D.	N.D.	N.D.	N.D.	0.2 mg/kg
Benzo(a)pyrene	N.D.	N.D.	N.D.	N.D.	0.2 mg/kg
Indeno(1,2,3-cd)pyrene	N.D.	N.D.	N.D.	N.D.	0.2 mg/kg
Dibenzo(a,h)anthracene	N.D.	N.D.	N.D.	N.D.	0.2 mg/kg
Benzo(g,h,i)perylene	N.D.	N.D.	N.D.	N.D.	0.2 mg/kg

Reference Report

Report No. A2240637385102R1

Page 10 of 21

Tested Item(s)	Result	MDL
	009	
Polycyclic Aromatic Hydrocarbons (PAHs)		
Naphthalene	N.D.	0.2 mg/kg
Acenaphthylene	N.D.	0.2 mg/kg
Acenaphthene	N.D.	0.2 mg/kg
Fluorene	N.D.	0.2 mg/kg
Phenanthrene	N.D.	0.2 mg/kg
Anthracene	N.D.	0.2 mg/kg
Fluoranthene	N.D.	0.2 mg/kg
Pyrene	N.D.	0.2 mg/kg
Benzo(a)anthracene	N.D.	0.2 mg/kg
Chrysene	N.D.	0.2 mg/kg
Benzo(b)fluoranthene	N.D.	0.2 mg/kg
Benzo(j)fluoranthene	N.D.	0.2 mg/kg
Benzo(e)pyrene	N.D.	0.2 mg/kg
Benzo(k)fluoranthene	N.D.	0.2 mg/kg
Benzo(a)pyrene	N.D.	0.2 mg/kg
Indeno(1,2,3-cd)pyrene	N.D.	0.2 mg/kg
Dibenzo(a,h)anthracene	N.D.	0.2 mg/kg
Benzo(g,h,i)perylene	N.D.	0.2 mg/kg

Tested Item(s)	Result			MDL
	001	002	003	
Tetrabromobisphenol A (TBBP-A)	N.D.	N.D.	N.D.	5 mg/kg

Tested Item(s)	Result			MDL
	004	005	006	
Tetrabromobisphenol A (TBBP-A)	N.D.	N.D.	N.D.	5 mg/kg

Tested Item(s)	Result			MDL
	007	008	009	
Tetrabromobisphenol A (TBBP-A)	N.D.	N.D.	N.D.	5 mg/kg

Reference Report

Report No. A2240637385102R1

Page 11 of 21

Tested Item(s)	Result			MDL
	001	002	003	
Phthalates				
Diisobutyl phthalate (DIBP) CAS#:84-69-5	N.D.	N.D.	N.D.	50 mg/kg
Dibutyl phthalate (DBP) CAS#:84-74-2	N.D.	N.D.	N.D.	50 mg/kg
Butyl benzyl phthalate (BBP) CAS#:85-68-7	N.D.	N.D.	N.D.	50 mg/kg
Di-(2-ethylhexyl) phthalate (DEHP) CAS#:117-81-7	N.D.	N.D.	N.D.	50 mg/kg
Di-n-octyl phthalate (DNOP) CAS#:117-84-0	N.D.	N.D.	N.D.	50 mg/kg
Di-isononyl phthalate (DINP) CAS#:28553-12-0,68515-48-0	N.D.	N.D.	N.D.	50 mg/kg
Di-iso-decyl phthalate (DIDP) CAS#:26761-40-0,68515-49-1	N.D.	N.D.	N.D.	50 mg/kg
Dimethyl phthalate (DMP) CAS#:131-11-3	N.D.	N.D.	N.D.	50 mg/kg
Dinonyl phthalate (DNP) CAS#:84-76-4	N.D.	N.D.	N.D.	50 mg/kg
Dipentyl phthalate (DPP/DPENP) CAS#:131-18-0	N.D.	N.D.	N.D.	50 mg/kg
Diethyl phthalate (DEP) CAS#:84-66-2	N.D.	N.D.	N.D.	50 mg/kg
Diisooctyl phthalate (DIOP) CAS#:27554-26-3	N.D.	N.D.	N.D.	50 mg/kg
Diisononyl adipate (DINA) CAS#:33703-08-1	N.D.	N.D.	N.D.	50 mg/kg
Dipropyl phthalate (DPrP) CAS#:131-16-8	N.D.	N.D.	N.D.	50 mg/kg
Diheptyl phthalate (DHP) CAS#:3648-21-3	N.D.	N.D.	N.D.	50 mg/kg
Dicyclohexyl phthalate (DCHP) CAS#:84-61-7	N.D.	N.D.	N.D.	50 mg/kg

Reference Report

Report No. A2240637385102R1

Page 12 of 21

Tested Item(s)	Result			MDL
	004	005	006	
Phthalates				
Diisobutyl phthalate (DIBP) CAS#:84-69-5	N.D.	N.D.	N.D.	50 mg/kg
Dibutyl phthalate (DBP) CAS#:84-74-2	N.D.	N.D.	N.D.	50 mg/kg
Butyl benzyl phthalate (BBP) CAS#:85-68-7	N.D.	N.D.	N.D.	50 mg/kg
Di-(2-ethylhexyl) phthalate (DEHP) CAS#:117-81-7	N.D.	N.D.	N.D.	50 mg/kg
Di-n-octyl phthalate (DNOP) CAS#:117-84-0	N.D.	N.D.	N.D.	50 mg/kg
Di-isononyl phthalate (DINP) CAS#:28553-12-0,68515-48-0	N.D.	N.D.	N.D.	50 mg/kg
Di-iso-decyl phthalate (DIDP) CAS#:26761-40-0,68515-49-1	N.D.	N.D.	N.D.	50 mg/kg
Dimethyl phthalate (DMP) CAS#:131-11-3	N.D.	N.D.	N.D.	50 mg/kg
Dinonyl phthalate (DNP) CAS#:84-76-4	N.D.	N.D.	N.D.	50 mg/kg
Dipentyl phthalate (DPP/DPENP) CAS#:131-18-0	N.D.	N.D.	N.D.	50 mg/kg
Diethyl phthalate (DEP) CAS#:84-66-2	N.D.	N.D.	N.D.	50 mg/kg
Diisooctyl phthalate (DIOP) CAS#:27554-26-3	N.D.	N.D.	N.D.	50 mg/kg
Diisononyl adipate (DINA) CAS#:33703-08-1	N.D.	N.D.	N.D.	50 mg/kg
Dipropyl phthalate (DPrP) CAS#:131-16-8	N.D.	N.D.	N.D.	50 mg/kg
Diheptyl phthalate (DHP) CAS#:3648-21-3	N.D.	N.D.	N.D.	50 mg/kg
Dicyclohexyl phthalate (DCHP) CAS#:84-61-7	N.D.	N.D.	N.D.	50 mg/kg

Reference Report

Report No. A2240637385102R1

Page 13 of 21

Tested Item(s)	Result			MDL
	007	008	009	
Phthalates				
Diisobutyl phthalate (DIBP) CAS#:84-69-5	N.D.	N.D.	N.D.	50 mg/kg
Dibutyl phthalate (DBP) CAS#:84-74-2	N.D.	N.D.	N.D.	50 mg/kg
Butyl benzyl phthalate (BBP) CAS#:85-68-7	N.D.	N.D.	N.D.	50 mg/kg
Di-(2-ethylhexyl) phthalate (DEHP) CAS#:117-81-7	N.D.	N.D.	N.D.	50 mg/kg
Di-n-octyl phthalate (DNOP) CAS#:117-84-0	N.D.	N.D.	N.D.	50 mg/kg
Di-isononyl phthalate (DINP) CAS#:28553-12-0,68515-48-0	N.D.	N.D.	N.D.	50 mg/kg
Di-iso-decyl phthalate (DIDP) CAS#:26761-40-0,68515-49-1	N.D.	N.D.	N.D.	50 mg/kg
Dimethyl phthalate (DMP) CAS#:131-11-3	N.D.	N.D.	N.D.	50 mg/kg
Dinonyl phthalate (DNP) CAS#:84-76-4	N.D.	N.D.	N.D.	50 mg/kg
Dipentyl phthalate (DPP/DPENP) CAS#:131-18-0	N.D.	N.D.	N.D.	50 mg/kg
Diethyl phthalate (DEP) CAS#:84-66-2	N.D.	N.D.	N.D.	50 mg/kg
Diisooctyl phthalate (DIOP) CAS#:27554-26-3	N.D.	N.D.	N.D.	50 mg/kg
Diisononyl adipate (DINA) CAS#:33703-08-1	N.D.	N.D.	N.D.	50 mg/kg
Dipropyl phthalate (DPrP) CAS#:131-16-8	N.D.	N.D.	N.D.	50 mg/kg
Diheptyl phthalate (DHP) CAS#:3648-21-3	N.D.	N.D.	N.D.	50 mg/kg
Dicyclohexyl phthalate (DCHP) CAS#:84-61-7	N.D.	N.D.	N.D.	50 mg/kg

Reference Report

Report No. A2240637385102R1

Page 14 of 21

Tested Item(s)	Result			MDL
	001	002	003	
Perfluorooctane Sulfonates (PFOS)	N.D.	N.D.	N.D.	0.01 mg/kg

Tested Item(s)	Result			MDL
	004	005	006	
Perfluorooctane Sulfonates (PFOS)	N.D.	N.D.	N.D.	0.01 mg/kg

Tested Item(s)	Result			MDL
	007	008	009	
Perfluorooctane Sulfonates (PFOS)	N.D.	N.D.	N.D.	0.01 mg/kg

Tested Item(s)	Result			MDL
	001	002	003	
Red phosphorus	N.D.	N.D.	N.D.	500 mg/kg

Tested Item(s)	Result			MDL
	004	005	006	
Red phosphorus	N.D.	N.D.	N.D.	500 mg/kg

Tested Item(s)	Result			MDL
	007	008	009	
Red phosphorus	N.D.	N.D.	N.D.	500 mg/kg

Reference Report

Report No. A2240637385102R1

Page 15 of 21

Sample/Part Description

No.	CTI Sample ID	Description
1	001	Black plastic grains
2	002	White plastic grains
3	003	Brown plastic grains
4	004	Blue plastic grains
5	005	Yellow plastic grains
6	006	Green plastic grains
7	007	Red plastic grains
8	008	Orange plastic grains
9	009	White ink
10	010	Cupreous metal

Remark: The sample(s) had been dissolved totally tested for Lead, Cadmium, Mercury.

-MDL = Method Detection Limit

-N.D. = Not Detected (<MDL or LOQ)

-mg/kg = ppm = parts per million

-1000 mg/kg = 0.1%

-LOQ = Limit of Quantification, The LOQ of Hexavalent chromium is 0.10 $\mu\text{g}/\text{cm}^2$

-▼The sample is negative for Cr(VI) – The Cr(VI) concentration is below 0.10 $\mu\text{g}/\text{cm}^2$. The coating is considered a non-Cr(VI) based coating. Information on storage conditions and production date of the tested sample is unavailable and thus Cr(VI) results represent status of the sample at the time of testing.

Note: This testing report revised “Appendix” based on the original report of No. A2240637385102.
This testing report displaces the original one which was invalid since the date of this testing report released.

Reference Report

Report No. A2240637385102R1

Page 16 of 21

Maximum PAHs limits (mg/kg) for the materials with relevant contact/grip and operating surfaces that are to be categorised based on the results of the risk assessment

Parameters	Category 1	Category 2		Category 3	
	Materials intended to be placed in the mouth, or materials in toys according to Directive 2009/48/EC or materials for the use by children up to 3 years of age coming into long-term contact with skin (more than 30s) during the intended use	Materials not covered by category 1, coming into long-term contact (more than 30s) or short-term repetitive contact** with skin during the intended or foreseeable use		Materials not covered by category 1 nor by category 2, coming into short-term contact (up to 30s) with skin during the intended or foreseeable use	
		Use by children (< 14 years) (include both active and passive direct contact)	Other consumer products	Use by children (< 14 years) (include both active and passive direct contact)	Other consumer products
Benzo(a)pyrene	< 0.2	< 0.2	< 0.5	< 0.5	< 1
Benzo(e)pyrene	< 0.2	< 0.2	< 0.5	< 0.5	< 1
Benzo(a)anthracene	< 0.2	< 0.2	< 0.5	< 0.5	< 1
Benzo(b)fluoranthene	< 0.2	< 0.2	< 0.5	< 0.5	< 1
Benzo(j)fluoranthene	< 0.2	< 0.2	< 0.5	< 0.5	< 1
Benzo(k)fluoranthene	< 0.2	< 0.2	< 0.5	< 0.5	< 1
Chrysene	< 0.2	< 0.2	< 0.5	< 0.5	< 1
Dibenz(a,h)anthracene	< 0.2	< 0.2	< 0.5	< 0.5	< 1
Benzo(g,h,i)perylene	< 0.2	< 0.2	< 0.5	< 0.5	< 1
Indenol(1,2,3-cd)pyrene	< 0.2	< 0.2	< 0.5	< 0.5	< 1
Phenanthrene, Anthracene, Fluoranthene, Pyrene	< 1 Sum	< 5 Sum	< 10 Sum	< 20 Sum	< 50 Sum
Naphthalene	< 1	< 2		< 10	
Sum 15 PAHs	< 1	< 5	< 10	< 20	< 50

** Definition “short-term repetitive contact” taken from REACH Annex XVII entry 50 amendment (REGULATION (EU) No.1272/2013)

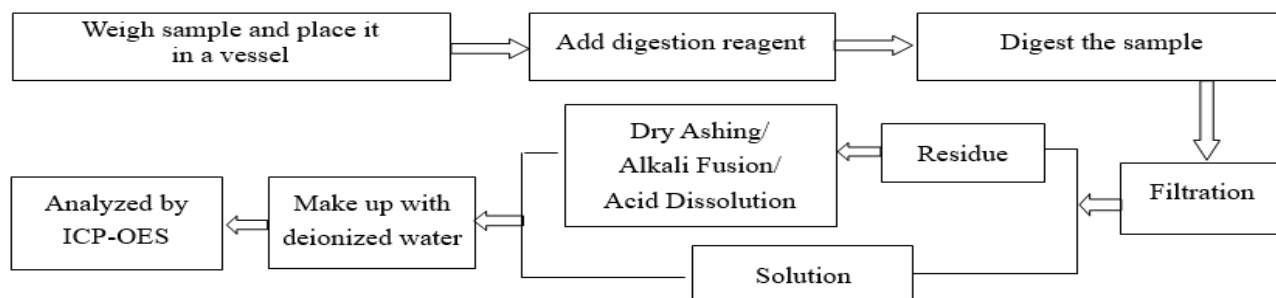
Reference Report

Report No. A2240637385102R1

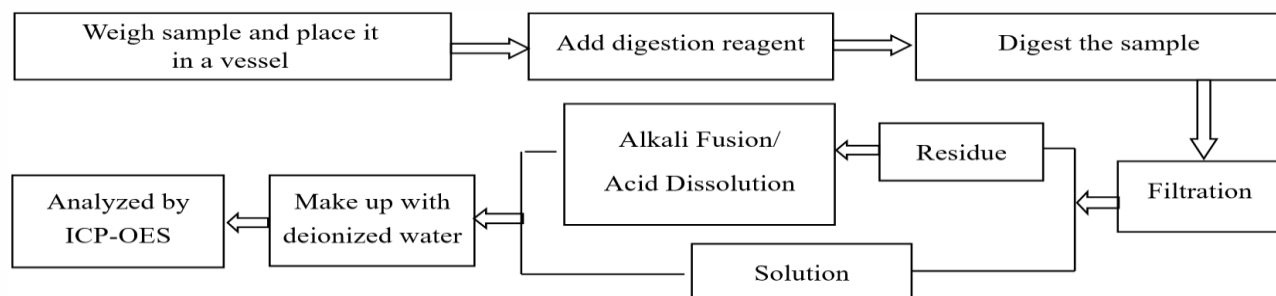
Page 17 of 21

Test Process

1. Lead (Pb), Cadmium (Cd), Chromium(Cr)

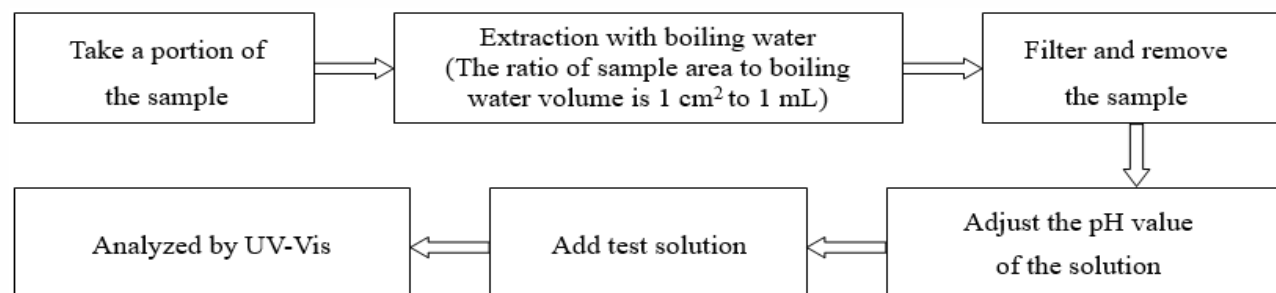


2. Mercury (Hg)

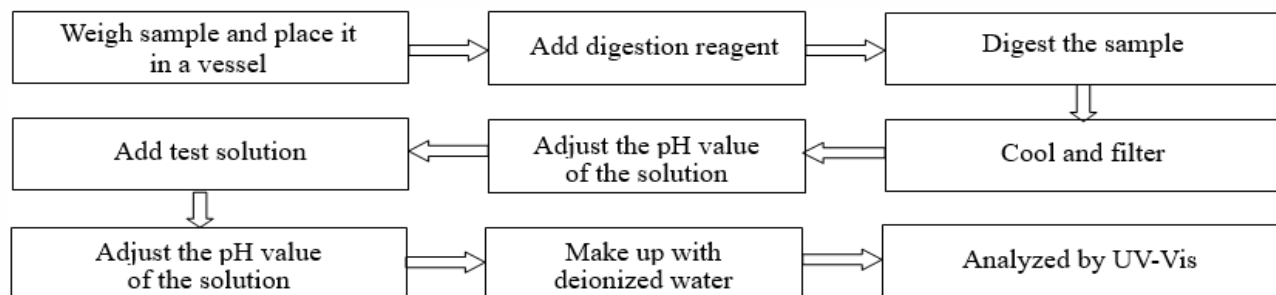


3. Hexavalent Chromium (Cr(VI))

(1) IEC 62321-7-1:2015



(2) IEC 62321-7-2:2017

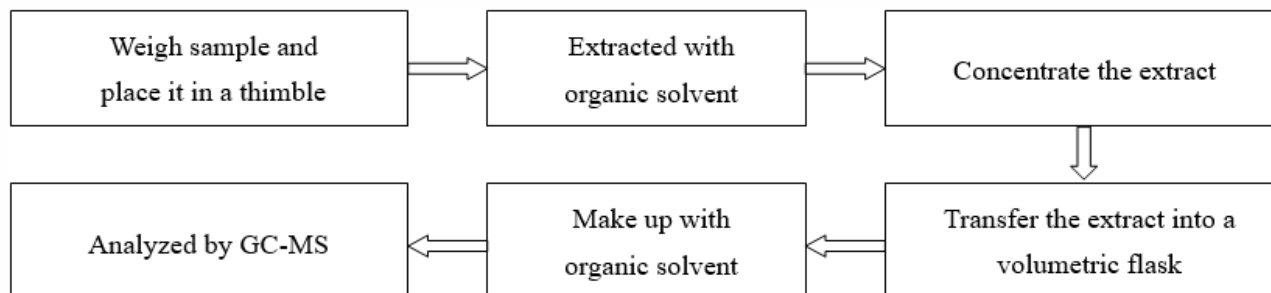


Reference Report

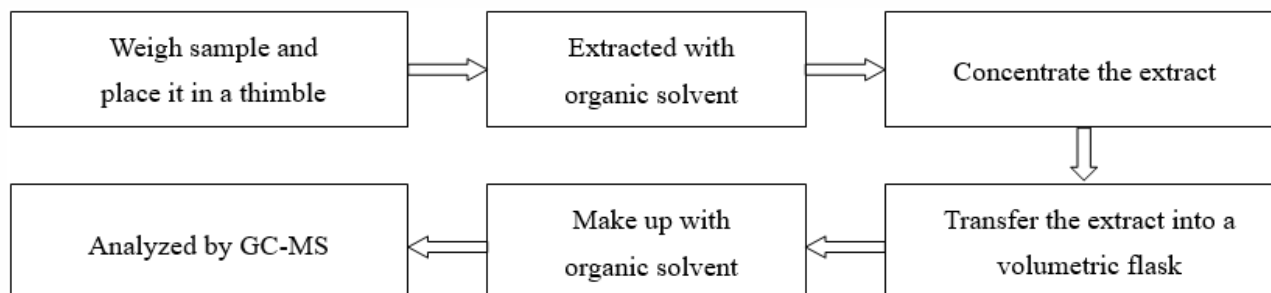
Report No. A2240637385102R1

Page 18 of 21

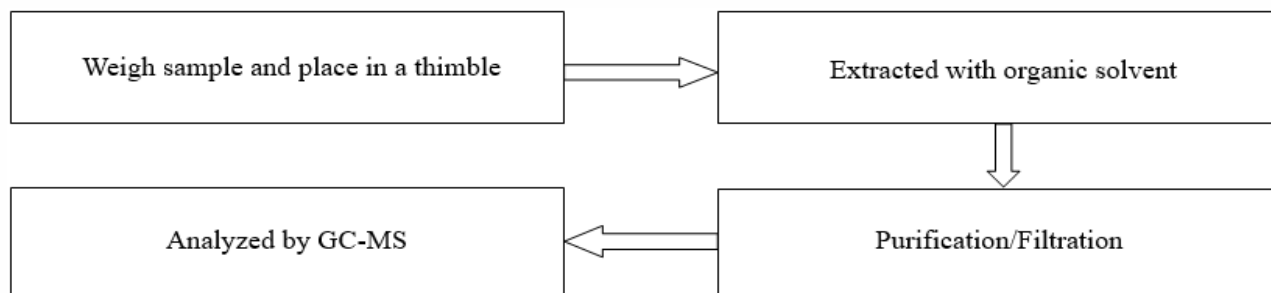
4. Polybrominated Biphenyls (PBBs), Polybrominated Diphenyl Ethers (PBDEs)



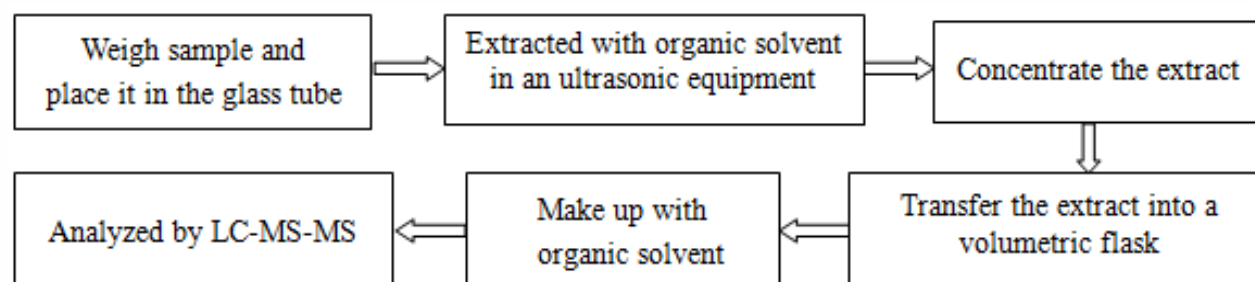
5. Phthalates



6. Polycyclic Aromatic Hydrocarbons (PAHs)



7. Tetrabromobisphenol A (TBBP-A)

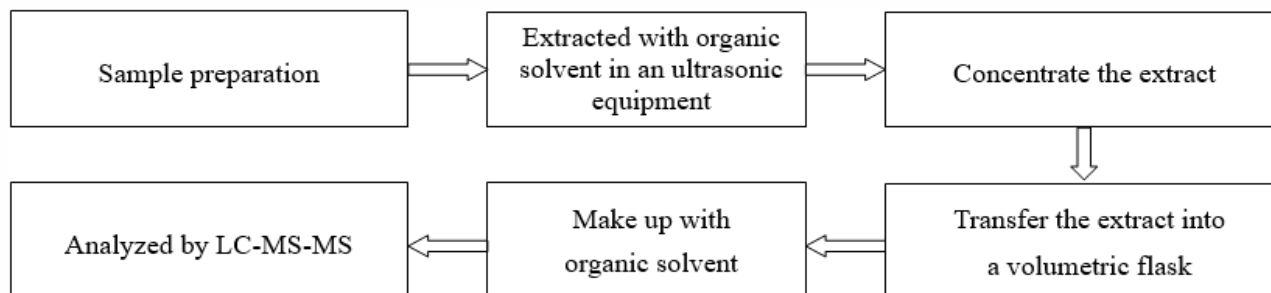


Reference Report

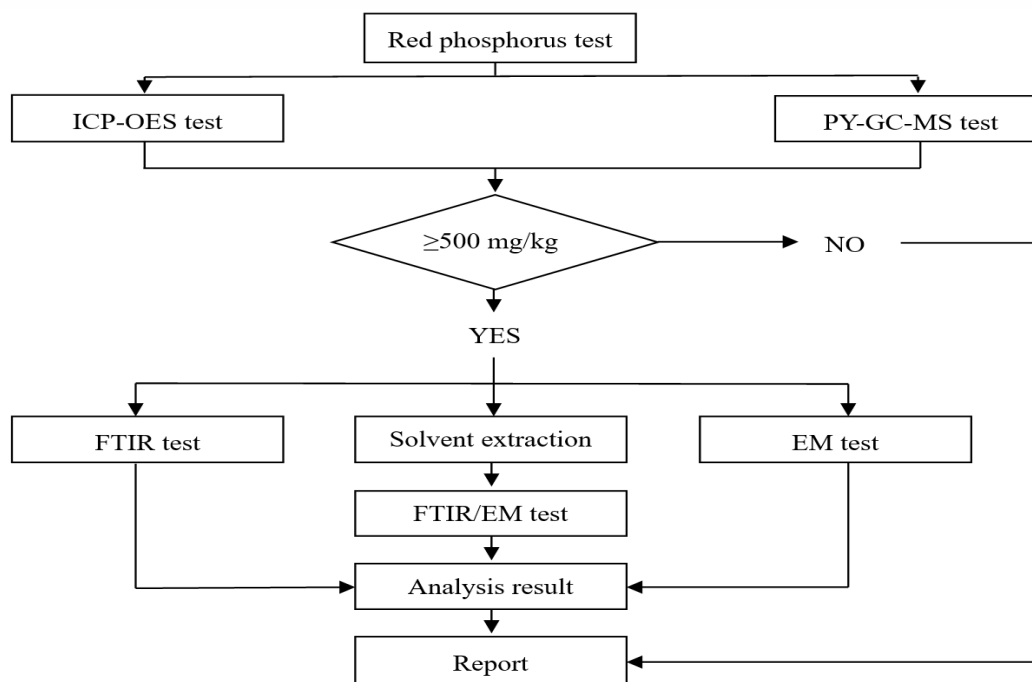
Report No. A2240637385102R1

Page 19 of 21

8. Perfluorooctane Sulfonates(PFOS)



9. Red phosphorus



Reference Report

Report No. A2240637385102R1

Page 20 of 21

Client Reference Photo (Non-tested sample)



Reference Report

Report No. A2240637385102R1

Page 21 of 21



Statement:

1. This report is considered invalid without approved signature, special seal and the seal on the perforation;
2. The Company Name shown on Report and Address, the sample(s) and sample information was/were provided by the applicant who should be responsible for the authenticity which CTI hasn't verified;
3. The result(s) shown in this report refer(s) only to the sample(s) tested;
4. Unless otherwise stated, the decision rule for conformity reporting is based on Binary Statement for Simple Acceptance Rule ($w=0$) stated in ILAC-G8:09/2019 / CNAS-GL015:2022;
5. Without written approval of CTI, this report can't be reproduced except in full;
6. In case of any discrepancy between the English version and Chinese version of the testing reports (if generated), the Chinese version shall prevail.

*** End of Report ***

Appendix

Client Reference Information

CABLE			
SV SVO SVT,SVTO	SPT-1,NISPT-1	VFF,HVFF	H03VV-F
SJT,SJTW	SPT-2,NISPT-2	VCTFK,HVCTFK	H03VVH2-F
SJTO,SJTOW,SJTOOW	SPT-3,NISPT-3	VCTF,HVCTF	H03V2V2-F
S,SJ,SJO,SJOO	SPT-1W,SPT-2W	VCT,HVCT	H03V2V2H2-F
SJOW,SJOOW	SRDT,DRT	VSF,HVSF	H05VV-F
ST,STW,STO,STOW,STOOW	1015,1007,1061,	HHVCTFK	H05VVH2-F
SO,SOO,SOW,SOOW	1728,1185,2468,	HHVCTF	H05V2V2-F
EVT EVJT EVE EVJE	2464, 2586,1283		H05V2V2H2-F
TYPE-W			H05BQ

Statement:

1. The Appendix Information was/were provided by the applicant who should be responsible for the authenticity which CTI hasn't verified.
2. The Appendix Information is/are the supplement(s) for the Report A2240637385102R1.

